

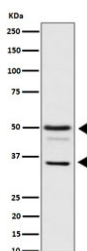
BAG family molecular chaperone regulator 1 Antibody / BAG1 [clone 28B16] (RQ8326)

Catalog No.	Formulation	Size
RQ8326	Antibody in PBS with 0.02% sodium azide, 50% glycerol and 0.4-0.5mg/ml BSA	100 ul

Recombinant **RABBIT MONOCLONAL**

[Bulk quote request](#)

Availability	1-3 business days
Species Reactivity	Human, Mouse, Rat
Format	Purified
Host	Rabbit
Clonality	Recombinant Rabbit Monoclonal
Isotype	Rabbit IgG
Clone Name	28B16
Purity	Affinity chromatography
UniProt	Q99933
Applications	Western Blot : 1:500-1:2000 Immunohistochemistry (FFPE) : 1:50-1:200 Immunofluorescence : 1:50-1:200
Limitations	This BAG family molecular chaperone regulator 1 antibody is available for research use only.



Western blot testing of human HeLa cell lysate with BAG family molecular chaperone regulator 1 antibody. Predicted molecular weight ~50 kDa (long form), 29-33 (short form).

Description

Co-chaperone for HSP70 and HSC70 chaperone proteins. Acts as a nucleotide-exchange factor (NEF) promoting the release of ADP from the HSP70 and HSC70 proteins thereby triggering client/substrate protein release. Nucleotide release is mediated via its binding to the nucleotide-binding domain (NBD) of HSPA8/HSC70 where as the substrate

release is mediated via its binding to the substrate-binding domain (SBD) of HSPA8/HSC70. [UniProt]

Application Notes

Optimal dilution of the BAG family molecular chaperone regulator 1 antibody should be determined by the researcher.

Immunogen

A synthetic peptide derived from human Bag1 was used as the immunogen for the BAG family molecular chaperone regulator 1 antibody.

Storage

Store the BAG family molecular chaperone regulator 1 antibody at -20oC.