

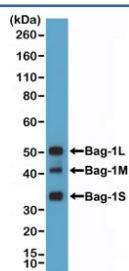
BAG-1 Antibody [clone RM356] (R20378)

Catalog No.	Formulation	Size
R20378-0.1ML	Antibody in PBS with 50% glycerol, 1% BSA and 0.09% sodium azide	100 ul

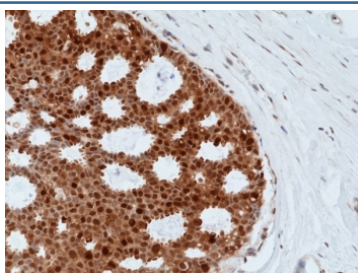
Recombinant **RABBIT MONOCLONAL**

[Bulk quote request](#)

Availability	1-3 business days
Species Reactivity	Human
Format	Purified
Clonality	Recombinant Rabbit Monoclonal
Isotype	Rabbit IgG
Clone Name	RM356
Purity	Protein A purified from animal origin-free supernatant
UniProt	Q99933
Localization	Cytoplasmic, nuclear
Applications	Immunohistochemistry (FFPE) : 1:500-1:1000 Western Blot : 1:1000-1:2000
Limitations	This recombinant BAG-1 antibody is available for research use only.



Western blot testing of human HeLa cell lysate with recombinant BAG-1 antibody at 1:1000.



IHC staining of FFPE human breast cancer tissue with recombinant BAG-1 antibody at 1:500.

Description

This antibody reacts to total human BAG-1 protein, including long (BAG-1L), medium (BAG-1M) and short (BAG-1S) isoforms.

Application Notes

The stated application concentrations are suggested starting points. Titration of the recombinant BAG-1 antibody may be required due to differences in protocols and secondary/substrate sensitivity.

Immunogen

A peptide corresponding to human BAG-1 (Bcl-2-associated athanogene 1) was used as the immunogen for the recombinant BAG-1 antibody.

Storage

Store the recombinant BAG-1 antibody at -20oC.