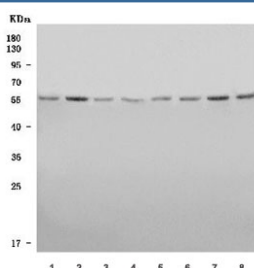


BAF60A Antibody / BRG1-associated factor 60A / SMARCD1 (RQ7465)

Catalog No.	Formulation	Size
RQ7465	0.5mg/ml if reconstituted with 0.2ml sterile DI water	100 ug

Bulk quote request

Availability	1-3 business days
Species Reactivity	Human
Format	Antigen affinity purified
Clonality	Polyclonal (rabbit origin)
Isotype	Rabbit IgG
Purity	Antigen affinity purified
Buffer	Lyophilized from 1X PBS with 2% Trehalose
UniProt	Q96GM5
Applications	Western Blot : 0.5-1ug/ml
Limitations	This BAF60A antibody is available for research use only.



Western blot testing of human 1) HeLa, 2) 293T, 3) PANC-1, 4) Jurkat, 5) MOLT4, 6) Caco-2, 7) SH-SY5Y and 8) Daudi cell lysate with BAF60A antibody. Predicted molecular weight ~58 kDa, commonly observed at 58-60 kDa.

Description

SWI/SNF-related matrix-associated actin-dependent regulator of chromatin subfamily D member 1 (SMARCD1), also called BRG1-associated factor 60A (BAF60A), is a protein that in humans is encoded by the SMARCD1 gene. The protein encoded by this gene is a member of the SWI/SNF family of proteins, whose members display helicase and ATPase activities and which are thought to regulate transcription of certain genes by altering the chromatin structure around those genes. The encoded protein is part of the large ATP-dependent chromatin remodeling complex SNF/SWI and has sequence similarity to the yeast Swp73 protein. Two transcript variants encoding different isoforms have been found for this gene.

Application Notes

Optimal dilution of the BAF60A antibody should be determined by the researcher.

Immunogen

Amino acids QSRKRPAPQQIQQVQQQAVQNR from the human protein were used as the immunogen for the BAF60A antibody.

Storage

After reconstitution, the BAF60A antibody can be stored for up to one month at 4oC. For long-term, aliquot and store at -20oC. Avoid repeated freezing and thawing.