

BAF57 Antibody / BRG1-associated factor 57 / SMARCE1 (RQ7665)

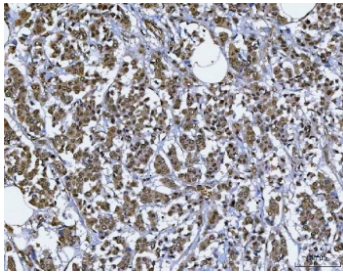
Catalog No.	Formulation	Size
RQ7665	0.5mg/ml if reconstituted with 0.2ml sterile DI water	100 ug

Bulk quote request

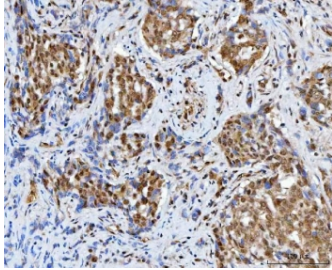
Availability	1-3 business days
Species Reactivity	Human, Mouse, Rat, Monkey
Format	Antigen affinity purified
Host	Rabbit
Clonality	Polyclonal (rabbit origin)
Isotype	Rabbit IgG
Purity	Antigen affinity purified
Buffer	Lyophilized from 1X PBS with 2% Trehalose
UniProt	Q969G3
Localization	Nuclear
Applications	Western Blot : 0.5-1ug/ml Immunohistochemistry (FFPE) : 2-5ug/ml Immunofluorescence : 5ug/ml Flow Cytometry : 1-3ug/million cells Direct ELISA : 0.1-0.5ug/ml
Limitations	This BAF57 antibody is available for research use only.



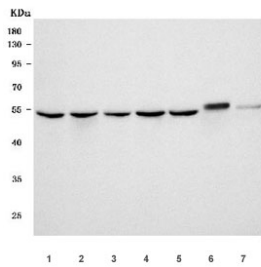
Immunofluorescent staining of FFPE human U-2 OS cells with BAF57 antibody (red) and DAPI nuclear stain (blue). HIER: steam section in pH6 citrate buffer for 20 min.



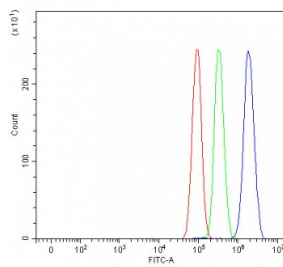
IHC staining of FFPE human breast cancer tissue with BAF57 antibody. HIER: boil tissue sections in pH8 EDTA for 20 min and allow to cool before testing.



IHC staining of FFPE human lung cancer tissue with BAF57 antibody. HIER: boil tissue sections in pH8 EDTA for 20 min and allow to cool before testing.



Western blot testing of 1) human HeLa, 2) human MCF7, 3) monkey COS-7, 4) human Jurkat, 5) rat C6, 6) mouse brain and 7) mouse NIH 3T3 cell lysate with BAF57 antibody. Predicted molecular weight ~47 kDa, commonly observed at 47-57 kDa.



Flow cytometry testing of human PC-3 cells with BAF57 antibody at 1ug/million cells (blocked with goat sera); Red=cells alone, Green=isotype control, Blue= BAF57 antibody.

Description

SWI/SNF-related matrix-associated actin-dependent regulator of chromatin subfamily E member 1 (SMARCE1), also called BRG1-associated factor 57 (BAF57), is a protein that in humans is encoded by the SMARCE1 gene. The protein encoded by this gene is part of the large ATP-dependent chromatin remodeling complex SWI/SNF, which is required for transcriptional activation of genes normally repressed by chromatin. The encoded protein, either alone or when in the SWI/SNF complex, can bind to 4-way junction DNA, which is thought to mimic the topology of DNA as it enters or exits the nucleosome. The protein contains a DNA-binding HMG domain, but disruption of this domain does not abolish the DNA-binding or nucleosome-displacement activities of the SWI/SNF complex. Unlike most of the SWI/SNF complex proteins, this protein has no yeast counterpart.

Application Notes

Optimal dilution of the BAF57 antibody should be determined by the researcher.

Immunogen

E. coli-derived recombinant human protein (amino acids Q18-A293) was used as the immunogen for the BAF57 antibody.

Storage

After reconstitution, the BAF57 antibody can be stored for up to one month at 4°C. For long-term, aliquot and store at -20°C. Avoid repeated freezing and thawing.