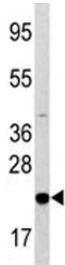


Bad Antibody (F42760)

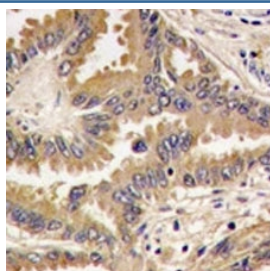
Catalog No.	Formulation	Size
F42760-0.4ML	In 1X PBS, pH 7.4, with 0.09% sodium azide	0.4 ml
F42760-0.08ML	In 1X PBS, pH 7.4, with 0.09% sodium azide	0.08 ml

Bulk quote request

Availability	1-3 business days
Species Reactivity	Human
Format	Antigen affinity purified
Clonality	Polyclonal (rabbit origin)
Purity	Antigen affinity
UniProt	Q92934
Applications	Western Blot : 1:1000 IHC (Paraffin) : 1:10-1:50
Limitations	This Bad antibody is available for research use only.



Western blot analysis of Bad antibody and HL-60 lysate. Predicted molecular weight: 19-23 kDa.



IHC analysis of FFPE human lung carcinoma tissue stained with Bad antibody.

Description

Bad is a member of the BCL-2 family. BCL-2 family members are known to be regulators of programmed cell death. This

protein positively regulates cell apoptosis by forming heterodimers with BCL-xL and BCL-2, and reversing their death repressor activity. Proapoptotic activity of this protein is regulated through its phosphorylation. Protein kinases AKT and MAP kinase, as well as protein phosphatase calcineurin were found to be involved in the regulation of this protein.

Application Notes

Titration of the Bad antibody may be required due to differences in protocols and secondary/substrate sensitivity.

Immunogen

A portion of amino acids 53-81 from the human protein was used as the immunogen for this Bad antibody.

Storage

Aliquot the Bad antibody and store frozen at -20oC or colder. Avoid repeated freeze-thaw cycles.