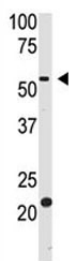


## BACE2 Antibody (F49441)

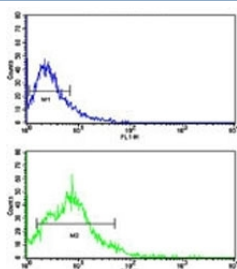
Catalog No.	Formulation	Size
F49441-0.4ML	In 1X PBS, pH 7.4, with 0.09% sodium azide	0.4 ml
F49441-0.08ML	In 1X PBS, pH 7.4, with 0.09% sodium azide	0.08 ml

**Bulk quote request**

<b>Availability</b>	1-3 business days
<b>Species Reactivity</b>	Human
<b>Format</b>	Purified
<b>Clonality</b>	Polyclonal (rabbit origin)
<b>Isotype</b>	Rabbit Ig
<b>Purity</b>	Purified
<b>UniProt</b>	Q9Y5Z0
<b>Applications</b>	Western Blot : 1:1000 Flow Cytometry : 1:10-1:50
<b>Limitations</b>	This BACE2 antibody is available for research use only.



Western blot testing of BACE2 antibody and HL-60 cell lysate



Flow cytometric analysis of HL-60 cells using BACE2 antibody (bottom histogram) compared to a [negative control](#) (top histogram). FITC-conjugated goat-anti-rabbit secondary Ab was used for the analysis.

## Description

Cerebral deposition of amyloid beta peptide is an early and critical feature of Alzheimer's disease and a frequent complication of Down syndrome. Amyloid beta peptide is generated by proteolytic cleavage of amyloid precursor protein by 2 proteases, one of which is the protein encoded by BACE2. This gene localizes to the 'Down critical region' of chromosome 21. The encoded protein, a member of the peptidase A1 protein family, is a type I integral membrane glycoprotein and aspartic protease.

## Application Notes

Titration of the BACE2 antibody may be required due to differences in protocols and secondary/substrate sensitivity.

## Immunogen

A portion of amino acids 336-365 from the human protein was used as the immunogen for this BACE2 antibody.

## Storage

Aliquot the BACE2 antibody and store frozen at -20oC or colder. Avoid repeated freeze-thaw cycles.