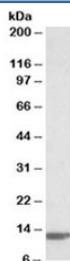


B2M Antibody (R35635)

Catalog No.	Formulation	Size
R35635-100UG	0.5 mg/ml in 1X TBS, pH7.3, with 0.5% BSA (US sourced) and 0.02% sodium azide	100 ug

[Bulk quote request](#)

Availability	1-3 business days
Species Reactivity	Human
Predicted Reactivity	Cow
Format	Antigen affinity purified
Host	Goat
Clonality	Polyclonal (goat origin)
Isotype	Goat Ig
Purity	Antigen affinity
Gene ID	567
Applications	Western Blot : 0.03-0.1ug/ml ELISA (peptide) LOD : 1:32000
Limitations	This B2M antibody is available for research use only.



Western blot testing of human duodenum lysate with B2M antibody at 0.03ug/ml.
Predicted molecular weight ~14 kDa.

Description

Additional name(s) for this target protein: Beta-2-microglobulin

Application Notes

Optimal dilution of the B2M antibody should be determined by the researcher.

Immunogen

Amino acids RIEKVEHSDLSFSKD were used as the immunogen for this B2M antibody.

Storage

Aliquot and store the B2M antibody at -20oC.