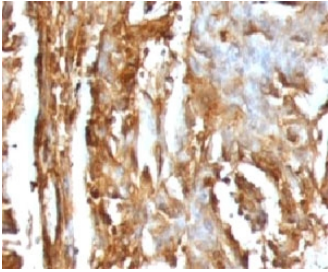


B2M Antibody [clone MGBP2-1] (V7123)

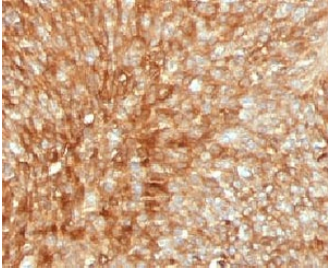
Catalog No.	Formulation	Size
V7123-100UG	0.2 mg/ml in 1X PBS with 0.1 mg/ml BSA (US sourced) and 0.05% sodium azide	100 ug
V7123-20UG	0.2 mg/ml in 1X PBS with 0.1 mg/ml BSA (US sourced) and 0.05% sodium azide	20 ug
V7123SAF-100UG	1 mg/ml in 1X PBS; BSA free, sodium azide free	100 ug
V7123IHC-7ML	Prediluted in 1X PBS with 0.1 mg/ml BSA (US sourced) and 0.05% sodium azide; *For IHC use only*	7 ml

Bulk quote request

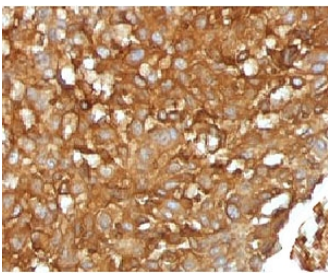
Availability	1-3 business days
Species Reactivity	Human
Format	Purified
Host	Mouse
Clonality	Monoclonal (mouse origin)
Isotype	Mouse IgG2b, kappa
Clone Name	MGBP2-1
Purity	Protein G affinity chromatography
UniProt	P61769
Localization	Cytoplasmic
Applications	Western Blot : 1-2ug/ml Flow Cytometry : 1-2ug/10 ⁶ cells Immunofluorescence : 2-4ug/ml Immunohistochemistry (FFPE) : 1-2ug/ml for 30 min at RT Prediluted IHC Only Format : incubate for 30 min at RT (1)
Limitations	This B2M antibody is available for research use only.



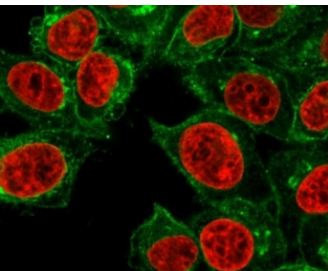
IHC testing of FFPE human renal carcinoma with B2M antibody (clone MGBP2-1). FFPE testing requires sections to be boiled in pH 9 10mM Tris with 1mM EDTA for 10-20 minutes, followed by cooling at RT for 20 minutes, prior to staining.



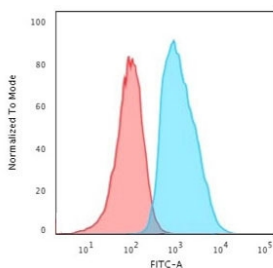
IHC testing of FFPE human bladder carcinoma with B2M antibody (clone MGBP2-1). FFPE testing requires sections to be boiled in pH 9 10mM Tris with 1mM EDTA for 10-20 minutes, followed by cooling at RT for 20 minutes, prior to staining.



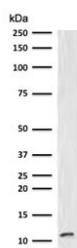
IHC testing of FFPE human melanoma with B2M antibody (clone MGBP2-1). FFPE testing requires sections to be boiled in pH 9 10mM Tris with 1mM EDTA for 10-20 minutes, followed by cooling at RT for 20 minutes, prior to staining.



Immunofluorescent staining of human HeLa cells with B2M antibody (green, clone MGBP2-1) and Reddot nuclear stain (red).



Flow cytometry testing of human HeLa cells with B2M antibody (clone MGBP2-1); Red=isotype control, Blue= B2M antibody.



Western blot testing of human Raji cell lysate with B2M antibody (clone MGBP2-1).

Description

Beta-2 Microglobulin/B2M is a component of the class I major histocompatibility complex (MHC). Involved in the presentation of peptide antigens to the immune system. [UniProt]

Application Notes

Titering of the B2M antibody may be required for optimal performance.

>1. The prediluted format is supplied in a dropper bottle and is optimized for use in IHC. After epitope retrieval step (if required), drip mAb solution onto the tissue section and incubate at RT for 30 min.

Immunogen

Full length recombinant human protein was used as the immunogen for the B2M antibody.

Storage

Store the B2M antibody at 2-8oC (with azide) or aliquot and store at -20oC or colder (without azide).