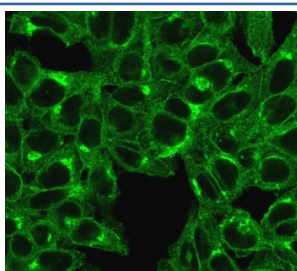


B2M Antibody / Beta-2 Microglobulin [clone SPM617] (V2801)

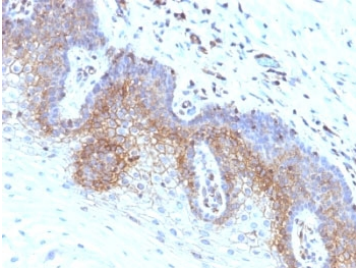
| Catalog No. | Formulation | Size |
|----------------|---|--------|
| V2801-100UG | 0.2 mg/ml in 1X PBS with 0.1 mg/ml BSA (US sourced) and 0.05% sodium azide | 100 ug |
| V2801-20UG | 0.2 mg/ml in 1X PBS with 0.1 mg/ml BSA (US sourced) and 0.05% sodium azide | 20 ug |
| V2801SAF-100UG | 1 mg/ml in 1X PBS; BSA free, sodium azide free | 100 ug |
| V2801IHC-7ML | Prediluted in 1X PBS with 0.1 mg/ml BSA (US sourced) and 0.05% sodium azide; *For IHC use only* | 7 ml |

[Bulk quote request](#)

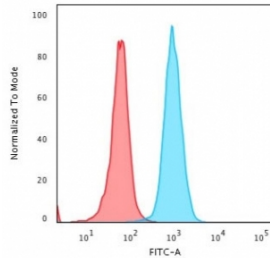
| | |
|---------------------------|---|
| Availability | 1-3 business days |
| Species Reactivity | Human |
| Format | Purified |
| Clonality | Monoclonal (mouse origin) |
| Isotype | Mouse IgG1, kappa |
| Clone Name | SPM617 |
| Purity | Protein G affinity chromatography |
| UniProt | P61769 |
| Localization | Cytoplasmic |
| Applications | Immunohistochemistry (FFPE) : 1-2ug/ml for 30 min at RT Western Blot : 1-2ug/ml Flow Cytometry : 1-2ug/million cells Immunofluorescence : 1-2ug/ml |
| Limitations | This B2M antibody is available for research use only. |



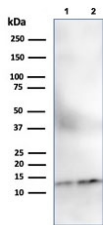
Immunofluorescent staining of permeabilized human HeLa cells with B2M antibody (clone SPM617).



IHC: Formalin-fixed, paraffin-embedded human cervical carcinoma stained with B2M antibody (clone SPM617).



Flow cytometry testing of PFA-fixed human HeLa cells with B2M antibody (clone SPM617); Red=isotype control, Blue= B2M antibody.



Western blot testing of human 1) ThP-1 and 2) Raji cell lysate with B2M antibody (clone SPM617). Expected molecular weight: 12-14 kDa.

Description

Serum Beta-2 Microglobulin (B2M) levels are a reflection of cell turnover. Levels rise with fever, inflammation, and infection. Increased serum levels are also seen in B-cell malignancies and in renal failure and may indicate a worse prognosis for patients with early-stage Hodgkin's lymphoma.

Application Notes

Optimal dilution of the B2M antibody should be determined by the researcher.

1. Staining of formalin/paraffin tissues requires boiling tissue sections in pH 9 10mM Tris with 1mM EDTA for 10-20 min followed by cooling at RT for 20 min.
2. The prediluted format is supplied in a dropper bottle and is optimized for use in IHC. After epitope retrieval step (if required), drip mAb solution onto the tissue section and incubate at RT for 30 min.

Immunogen

Full length recombinant human protein was used as the immunogen for the B2M antibody.

Storage

Store the B2M antibody at 2-8°C (with azide) or aliquot and store at -20°C or colder (without azide).

