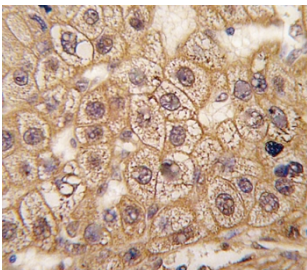


B2AR Antibody / Beta-2-Adrenergic receptor / ADRB2 (F55107)

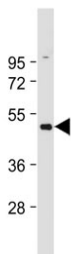
Catalog No.	Formulation	Size
F55107-0.4ML	In 1X PBS, pH 7.4, with 0.09% sodium azide	0.4 ml
F55107-0.08ML	In 1X PBS, pH 7.4, with 0.09% sodium azide	0.08 ml

[Bulk quote request](#)

Availability	1-3 business days
Species Reactivity	Human
Format	Purified
Host	Rabbit
Clonality	Polyclonal (rabbit origin)
Isotype	Rabbit Ig
Purity	Antigen affinity
UniProt	P07550
Localization	Cell membrane, cytoplasm
Applications	Western Blot : 1:1000-1:2000 Immunohistochemistry (FFPE) : 1:10-1:50
Limitations	This B2AR antibody is available for research use only.



IHC staining of FFPE human hepatocarcinoma tissue with B2AR antibody. HIER: steam section in pH6 citrate buffer for 20 min and allow to cool prior to staining.



Western blot testing of HUVEC lysate with B2AR antibody. Predicted molecular weight ~46 kDa.

Description

The Beta-2-Adrenergic receptor is a protein that is found on the surface of cells, particularly in the lungs, heart, and smooth muscle tissue. It is a member of the G-protein coupled receptor family which transmits signals from outside the cell to the inside, triggering a cascade of cellular responses. The Beta-2-Adrenergic receptor plays a critical role in regulating various physiological functions, including bronchodilation, heart rate, and glucose metabolism. Dysregulation of the Beta-2-Adrenergic receptor has been implicated in a variety of diseases, such as asthma, chronic obstructive pulmonary disease, and heart failure.

Application Notes

The stated application concentrations are suggested starting points. Titration of the B2AR antibody may be required due to differences in protocols and secondary/substrate sensitivity.

Immunogen

A portion of amino acids 236-264 from the human protein was used as the immunogen for the B2AR antibody.

Storage

Aliquot the B2AR antibody and store frozen at -20oC or colder. Avoid repeated freeze-thaw cycles.