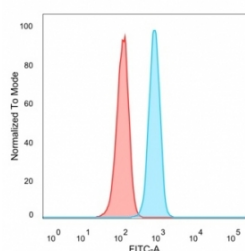


B-cell lymphoma/leukemia 11A Antibody / BCL11A [clone PCRP-BCL11A-1H3] (V9714)

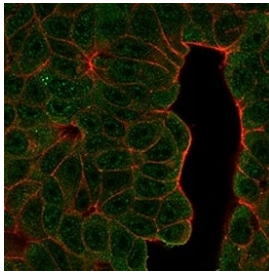
Catalog No.	Formulation	Size
V9714-100UG	0.2 mg/ml in 1X PBS with 0.1 mg/ml BSA (US sourced), 0.05% sodium azide	100 ug
V9714-20UG	0.2 mg/ml in 1X PBS with 0.1 mg/ml BSA (US sourced), 0.05% sodium azide	20 ug
V9714SAF-100UG	1 mg/ml in 1X PBS; BSA free, sodium azide free	100 ug

[Bulk quote request](#)

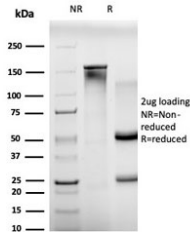
Availability	1-3 business days
Species Reactivity	Human
Format	Purified
Host	Mouse
Clonality	Monoclonal (mouse origin)
Isotype	Mouse IgG1
Clone Name	PCRP-BCL11A-1H3
Purity	Protein A/G affinity
UniProt	Q9H165
Localization	Cytoplasm, Nucleus
Applications	ELISA (order BSA-free Format For Coating) : Flow Cytometry : 1-2ug/million cells Immunofluorescence : 1-2ug/ml
Limitations	This B-cell lymphoma/leukemia 11A antibody is available for research use only.



FACS staining of PFA-fixed human HeLa cells with B-cell lymphoma/leukemia 11A antibody (blue, clone PCRP-BCL11A-1H3) and isotype control (red).

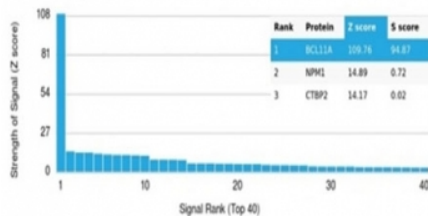


Immunofluorescent staining of PFA-fixed human MCF-7 cells using B-cell lymphoma/leukemia 11A antibody (green, clone PCRP-BCL11A-1H3) and phalloidin (red).



SDS-PAGE analysis of purified, BSA-free B-cell lymphoma/leukemia 11A antibody (clone PCRP-BCL11A-1H3) as confirmation of integrity and purity.

Human Protein Microarray Specificity Validation



Analysis of HuProt(TM) microarray containing more than 19,000 full-length human proteins using B-cell lymphoma/leukemia 11A antibody (clone PCRP-BCL11A-1H3). These results demonstrate the foremost specificity of the PCRP-BCL11A-1H3 mAb. Z- and S- score: The Z-score represents the strength of a signal that an antibody (in combination with a fluorescently-tagged anti-IgG secondary Ab) produces when binding to a particular protein on the HuProt(TM) array. Z-scores are described in units of standard deviations (SD's) above the mean value of all signals generated on that array. If the targets on the HuProt(TM) are arranged in descending order of the Z-score, the S-score is the difference (also in units of SD's) between the Z-scores. The S-score therefore represents the relative target specificity of an Ab to its intended target.

Description

Bcl-11a (CtIP-1, EVI9, B cell chronic lymphocytic leukemia (CLL)/lymphoma 11A) and Bcl-11b (CtIP-2, RIT1, B cell CLL/lymphoma 11B) genes play crucial roles in lymphopoiesis and influence the progression of hematopoietic malignancies. Disruption of the Bcl-11b locus is linked to T cell acute lymphoblastic leukemia, and the loss of heterozygosity in mice results in T cell lymphoma. Bcl-11 proteins are related C2H2 zinc-finger transcription factors that act as transcriptional repressors. Bcl-11b can interact with the metastasis-associated proteins MTA1 and MTA2 through the amino-terminal region. Bcl-11a is essential for postnatal development and normal lymphopoiesis. The Bcl-11a mouse gene is a common site of retroviral integration in myeloid leukemia, and may function as a leukemia disease gene, in part, through its interaction with Bcl-6.

Application Notes

Optimal dilution of the B-cell lymphoma/leukemia 11A antibody should be determined by the researcher.

Immunogen

Recombinant full-length human protein was used as the immunogen for the B-cell lymphoma/leukemia 11A antibody.

Storage

Aliquot the B-cell lymphoma/leukemia 11A antibody and store frozen at -20°C or colder. Avoid repeated freeze-thaw cycles.

