

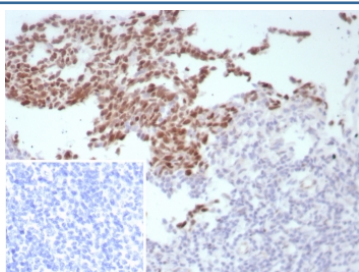
## B-Cell Lymphoma 6 Antibody / BCL6 [clone BCL6/8808R] (V5023)

Catalog No.	Formulation	Size
V5023-100UG	0.2 mg/ml in 1X PBS with 0.1 mg/ml BSA (US sourced), 0.05% sodium azide	100 ug
V5023-20UG	0.2 mg/ml in 1X PBS with 0.1 mg/ml BSA (US sourced), 0.05% sodium azide	20 ug
V5023SAF-100UG	1 mg/ml in 1X PBS; BSA free, sodium azide free	100 ug

Recombinant **RABBIT MONOCLONAL**

[Bulk quote request](#)

<b>Availability</b>	1-3 business days
<b>Species Reactivity</b>	Human
<b>Format</b>	Purified
<b>Clonality</b>	Recombinant Rabbit Monoclonal
<b>Isotype</b>	Rabbit IgG, kappa
<b>Clone Name</b>	BCL6/8808R
<b>Purity</b>	Protein A/G affinity
<b>UniProt</b>	P41182
<b>Localization</b>	Nucleus
<b>Applications</b>	Immunohistochemistry (FFPE) : 1-2ug/ml for 30 min at RT
<b>Limitations</b>	This B-Cell Lymphoma 6 antibody is available for research use only.



IHC staining of FFPE human tonsil tissue with B-Cell Lymphoma 6 antibody (clone BCL6/8808R). Inset: PBS used in place of primary Ab (secondary Ab negative control).  
 HIER: boil tissue sections in pH 9 10mM Tris with 1mM EDTA for 20 min and allow to cool before testing.

### Description

Recognizes a protein of 95kDa, which is identified as Bcl-6. Antibody to bcl-6 is helpful in a number of diagnostic settings: (1) In the differential diagnosis of small B-cell lymphoma. Follicular lymphoma will show bcl-6 (and CD10) positivity whereas other small B-cell lymphomas are usually negative. (2) Bcl-6 is an important prognostic marker in diffuse large B-cell lymphomas (DLBCL), where CD10, bcl-6 and MUM1/IRF4 are used to identify germinal center and activated B-cell

phenotypes. (3) Bcl-6 can be valuable in distinguishing classical Hodgkin lymphoma from nodular lymphocyte predominant Hodgkin lymphoma (NLPHL). The Reed-Sternberg cells of classical Hodgkin lymphoma are bcl-6 negative whereas the large ( L&H ) cells of NLPHL are bcl-6 positive. In contrast, anti-Bcl-6 rarely stains mantle-cell lymphoma and MALT lymphoma.

## Application Notes

Optimal dilution of the B-Cell Lymphoma 6 antibody should be determined by the researcher.

## Immunogen

A recombinant partial protein sequence (within amino acids 1-400) from the human protein was used as the immunogen for the B-Cell Lymphoma 6 antibody.

## Storage

Aliquot the B-Cell Lymphoma 6 antibody and store frozen at -20oC or colder. Avoid repeated freeze-thaw cycles.