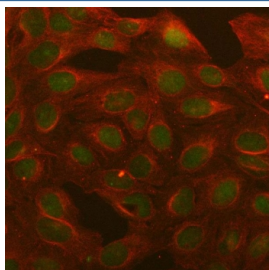


B-cell lymphoma 3 Antibody / BCL3 (RQ8498)

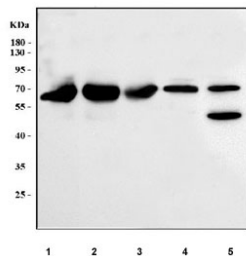
Catalog No.	Formulation	Size
RQ8498	0.5mg/ml if reconstituted with 0.2ml sterile DI water	100 ug

Bulk quote request

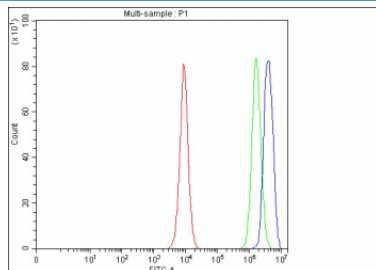
Availability	1-3 days
Species Reactivity	Human, Mouse, Rat
Format	Antigen affinity purified
Clonality	Polyclonal (rabbit origin)
Isotype	Rabbit IgG
Purity	Antigen affinity purified
Buffer	Lyophilized from 1X PBS with 2% Trehalose
UniProt	P20749
Localization	Nuclear
Applications	Western Blot : 0.5-1ug/ml Immunofluorescence : 5ug/ml Flow Cytometry : 1-3ug/million cells ELISA : 0.1-0.5ug/ml
Limitations	This B-cell lymphoma 3 antibody is available for research use only.



Immunofluorescent staining of FFPE human U2OS cells with B-cell lymphoma 3 antibody (green) and Beta Tubulin mAb (red). HIER: steam section in pH6 citrate buffer for 20 min.



Western blot testing of 1) human placenta, 2) human HCCT, 3) human HCCP, 4) rat brain and 5) mouse brain tissue lysate with B-cell lymphoma 3 antibody. Predicted molecular weight ~60 kDa.



Flow cytometry testing of fixed and permeabilized human PC-3 cells with B-cell lymphoma 3 antibody at 1ug/million cells (blocked with goat sera); Red=cells alone, Green=isotype control, Blue= B-cell lymphoma 3 antibody.

Description

B-cell lymphoma 3-encoded protein is a protein that in humans is encoded by the BCL3 gene. This gene is a proto-oncogene candidate. It is identified by its translocation into the immunoglobulin alpha-locus in some cases of B-cell leukemia. The protein encoded by this gene contains seven ankyrin repeats, which are most closely related to those found in I kappa B proteins. This protein functions as a transcriptional co-activator that activates through its association with NF-kappa B homodimers. The expression of this gene can be induced by NF-kappa B, which forms a part of the autoregulatory loop that controls the nuclear residence of p50 NF-kappa B.

Application Notes

Optimal dilution of the B-cell lymphoma 3 antibody should be determined by the researcher.

Immunogen

An E.coli-derived human recombinant protein (amino acids E118-A366) was used as the immunogen for the B-cell lymphoma 3 antibody.

Storage

After reconstitution, the B-cell lymphoma 3 antibody can be stored for up to one month at 4oC. For long-term, aliquot and store at -20oC. Avoid repeated freezing and thawing.