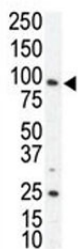


AXL Antibody (F50552)

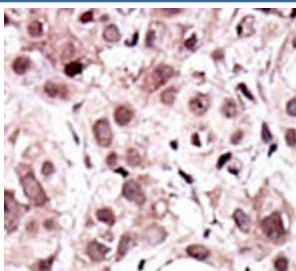
Catalog No.	Formulation	Size
F50552-0.4ML	In 1X PBS, pH 7.4, with 0.09% sodium azide	0.4 ml
F50552-0.08ML	In 1X PBS, pH 7.4, with 0.09% sodium azide	0.08 ml

[Bulk quote request](#)

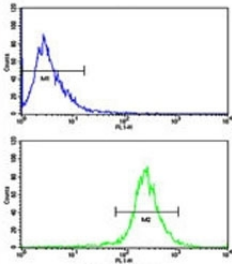
Availability	1-3 business days
Species Reactivity	Human
Format	Purified
Host	Rabbit
Clonality	Polyclonal (rabbit origin)
Isotype	Rabbit Ig
Purity	Purified
UniProt	P30530
Applications	Western Blot : 1:1000 IHC (Paraffin) : 1:50-1:100 Flow Cytometry : 1:10-1:50
Limitations	This AXL antibody is available for research use only.



Western blot analysis of AXL antibody and SKBR3 cell lysate. Predicted molecular weight is 104 kDa unglycosylated, 120-140 kDa with glycosylation



IHC analysis of FFPE human cancer tissue stained with the AXL antibody



Flow cytometric analysis of WiDr cells using AXL antibody (bottom histogram) compared to a negative control (top histogram). FITC-conjugated goat-anti-rabbit secondary Ab was used for the analysis.

Description

AXL, a member of the AXL/UFO subfamily of Tyr protein kinases, may function as a signal transducer between specific cell types of mesodermal origin. This Type I membrane protein has transforming potential in patients with chronic myeloproliferative disorder or chronic myelocytic leukemia. The protein contains 2 putative fibronectin type III domains and 2 putative immunoglobulin-like C2-type domains.

Application Notes

Titration of the AXL antibody may be required due to differences in protocols and secondary/substrate sensitivity.

Immunogen

A portion of amino acids 13-44 from the human protein was used as the immunogen for this AXL antibody.

Storage

Aliquot the AXL antibody and store frozen at -20oC or colder. Avoid repeated freeze-thaw cycles.