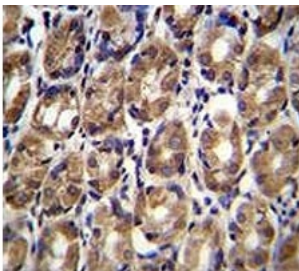


Axin-1 Antibody (F41872)

Catalog No.	Formulation	Size
F41872-0.4ML	In 1X PBS, pH 7.4, with 0.09% sodium azide	0.4 ml
F41872-0.08ML	In 1X PBS, pH 7.4, with 0.09% sodium azide	0.08 ml

[Bulk quote request](#)

Availability	1-3 business days
Species Reactivity	Human
Format	Antigen affinity purified
Host	Rabbit
Clonality	Polyclonal (rabbit origin)
Isotype	Rabbit Ig
Purity	Antigen affinity
UniProt	O15169
Applications	Western Blot : 1:1000 IHC (Paraffin) : 1:10-1:50
Limitations	This Axin-1 antibody is available for research use only.



Axin-1 antibody immunohistochemistry analysis in formalin fixed and paraffin embedded human stomach tissue



Axin-1 antibody western blot analysis in MDA-MB435 lysate. Predicted molecular weight: 95-110 kDa.

Description

Axin-1 Antibody specifically detects Axin-1, a cytoplasmic protein which contains a regulation of G-protein signaling (RGS) domain and a dishevelled and axin (DIX) domain. The encoded protein interacts with adenomatosis polyposis coli, catenin beta-1, glycogen synthase kinase 3 beta, protein phosphate 2, and itself. This protein functions as a negative regulator of the wingless-type MMTV integration site family, member 1 (WNT) signaling pathway and can induce apoptosis. The crystal structure of a portion of this protein, alone and in a complex with other proteins, has been resolved. Mutations in this gene have been associated with hepatocellular carcinoma, hepatoblastomas, ovarian endometrioid adenocarcinomas, and medullablastomas. Two transcript variants encoding distinct isoforms have been identified for the gene.

Explore our [AXIN1 Antibody / Wnt Signaling Scaffold Protein Antibody](#) page for additional validation data and applications involving Wnt signaling, beta-catenin regulation, and developmental pathway control.

Application Notes

Titration of the Axin-1 antibody may be required due to differences in protocols and secondary/substrate sensitivity.

Immunogen

A portion of amino acids 710-738 from the human protein was used as the immunogen for this Axin-1 antibody.

Storage

Aliquot the Axin-1 antibody and store frozen at -20oC or colder. Avoid repeated freeze-thaw cycles.