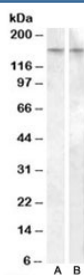


## AVPR1B Antibody (R35132)

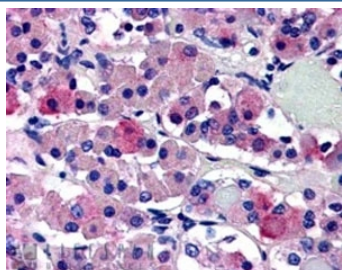
Catalog No.	Formulation	Size
R35132-100UG	0.5 mg/ml in 1X TBS, pH7.3, with 0.5% BSA (US sourced) and 0.02% sodium azide	100 ug

**Bulk quote request**

<b>Availability</b>	1-3 business days
<b>Species Reactivity</b>	Human
<b>Format</b>	Antigen affinity purified
<b>Clonality</b>	Polyclonal (goat origin)
<b>Isotype</b>	Goat Ig
<b>Purity</b>	Antigen affinity
<b>Gene ID</b>	553
<b>Applications</b>	Western Blot : 0.5-2ug/ml Immunohistochemistry (FFPE) : 5-10ug/ml ELISA (peptide) LOD : 1:32000
<b>Limitations</b>	This AVPR1B antibody is available for research use only.



Western blot testing of human amygdala lysate with AVPR1B antibody, cat # R35132 (0.5ug/ml, lane A) and rat brain lysate with AVPR1B antibody, [cat # R34558](#) (0.05ug/ml, lane B). Predicted molecular weight: ~47/170kDa (unmodified/modified).



IHC staining of FFPE human anterior pituitary gland with AVPR1B antibody at 5ug/ml. HIER: steamed with pH6 citrate buffer, AP-staining.

## Description

Additional name(s) for this target protein: Arginine vasopressin receptor 1B

## Application Notes

Optimal dilution of the AVPR1B antibody should be determined by the researcher.

## Immunogen

Amino acids PRDLELADGEGTAE were used as the immunogen for this AVPR1B antibody.

## Storage

Aliquot and store the AVPR1B antibody at -20oC.