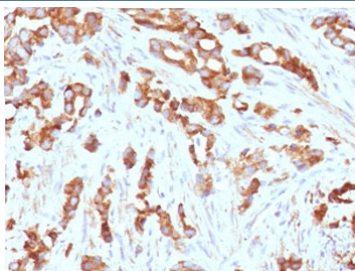


## AURKB Antibody / Aurora B [clone ARRK2-1] (V3927)

Catalog No.	Formulation	Size
V3927-100UG	0.2 mg/ml in 1X PBS with 0.1 mg/ml BSA (US sourced) and 0.05% sodium azide	100 ug
V3927-20UG	0.2 mg/ml in 1X PBS with 0.1 mg/ml BSA (US sourced) and 0.05% sodium azide	20 ug
V3927SAF-100UG	1 mg/ml in 1X PBS; BSA free, sodium azide free	100 ug

[Bulk quote request](#)

<b>Availability</b>	1-3 business days
<b>Species Reactivity</b>	Human. Other species not tested.
<b>Format</b>	Purified
<b>Host</b>	Mouse
<b>Clonality</b>	Monoclonal (mouse origin)
<b>Isotype</b>	Mouse IgG1
<b>Clone Name</b>	ARRK2-1
<b>Purity</b>	Protein G affinity
<b>UniProt</b>	Q96GD4
<b>Localization</b>	Nuclear, cytoplasmic
<b>Applications</b>	IHC (FFPE) : 1-2ug/ml for 30 min at RT
<b>Limitations</b>	This AURKB antibody is available for research use only.



IHC testing of FFPE human prostate tissue with AURKB antibody (clone ARRK2-1).  
HIER: boil tissue sections in pH6, 10mM citrate buffer, for 10-20 min followed by cooling at RT for 20 min.

## Description

Aurora B is a serine/threonine-protein kinase component of the chromosomal passenger complex (CPC), a complex that acts as a key regulator of mitosis. The CPC complex has essential functions at the centromere in ensuring correct chromosome alignment and segregation and is required for chromatin-induced microtubule stabilization and spindle assembly. Involved in the bipolar attachment of spindle microtubules to kinetochores and is a key regulator for the onset of cytokinesis during mitosis. Required for central/midzone spindle assembly and cleavage furrow formation. [UniProt]

## Application Notes

Optimal dilution of the AURKB antibody should be determined by the researcher.

## Immunogen

Amino acids 89-251 were used as the immunogen for this AURKB antibody.

## Storage

Store the AURKB antibody at 2-8oC (with azide) or aliquot and store at -20oC or colder (without azide).