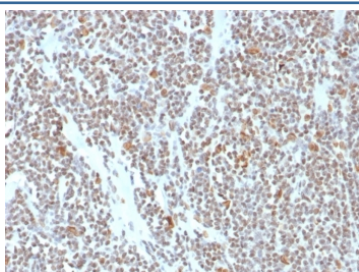


ATRX Antibody / RAD54 [clone ATRX/7940] (V5363)

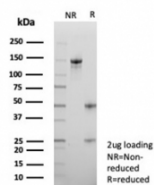
Catalog No.	Formulation	Size
V5363-100UG	0.2 mg/ml in 1X PBS with 0.1 mg/ml BSA (US sourced), 0.05% sodium azide	100 ug
V5363-20UG	0.2 mg/ml in 1X PBS with 0.1 mg/ml BSA (US sourced), 0.05% sodium azide	20 ug
V5363SAF-100UG	1 mg/ml in 1X PBS; BSA free, sodium azide free	100 ug

Bulk quote request

Availability	1-3 business days
Species Reactivity	Human
Format	Purified
Clonality	Monoclonal (mouse origin)
Isotype	Mouse IgG
Clone Name	ATRX/7940
Purity	Protein A/G affinity
UniProt	P46100
Localization	Nucleus
Applications	Immunohistochemistry (FFPE) : 1-2ug/ml for 30 min at RT
Limitations	This ATRX antibody is available for research use only.



IHC staining of FFPE human colon tissue with ATRX antibody (clone ATRX/7940).
 HIER: boil tissue sections in pH 9 10mM Tris with 1mM EDTA for 20 min and allow to cool before testing.



SDS-PAGE analysis of purified, BSA-free ATRX antibody (clone ATRX/7940) as confirmation of integrity and purity.

Description

ATRX is a member of the Snf2 family of helicase/ATPases, which contribute to the remodeling of the nucleosome structure in an ATP-dependent manner, and facilitate the initiation of transcription and replication. Structurally, ATRX contains a PHD zinc finger motif. ATRX is regulated throughout the cell cycle where it is differentially distributed within the nucleus. During interphase, ATRX predominately associates with the nuclear matrix, while during mitosis, ATRX localizes with condensed chromatin. At the onset of M phase, phosphorylation rapidly induces this redistribution of ATRX to the short arms of human acrocentric chromosomes, where it then specifically complexes with heterochromatin protein 1 to mediate chromosomal segregation. Mutations in the ATRX gene correlate with a high incidence of severe X-linked form of syndromal mental retardation associated with thalassemia or ATRX syndrome .

Application Notes

Optimal dilution of the ATRX antibody should be determined by the researcher.

Immunogen

Recombinant full-length human ATRX protein was used as the immunogen for the ATRX antibody.

Storage

Aliquot the ATRX antibody and store frozen at -20oC or colder. Avoid repeated freeze-thaw cycles.