

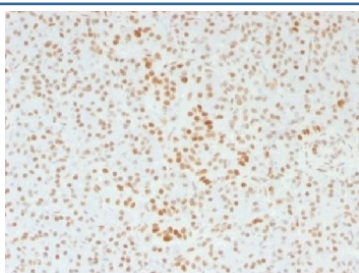
ATRX Antibody / RAD54 [clone 39f] (V3738)

Catalog No.	Formulation	Size
V3738-100UG	0.2 mg/ml in 1X PBS with 0.1 mg/ml BSA (US sourced) and 0.05% sodium azide	100 ug
V3738-20UG	0.2 mg/ml in 1X PBS with 0.1 mg/ml BSA (US sourced) and 0.05% sodium azide	20 ug
V3738SAF-100UG	1 mg/ml in 1X PBS; BSA free, sodium azide free	100 ug
V3738IHC-7ML	Prediluted in 1X PBS with 0.1 mg/ml BSA (US sourced) and 0.05% sodium azide; *For IHC use only*	7 ml

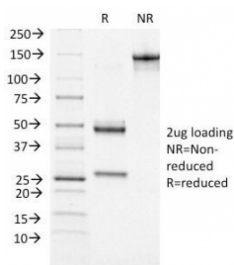
 [Citations \(14\)](#)

[Bulk quote request](#)

Species Reactivity	Human
Format	Purified
Host	Mouse
Clonality	Monoclonal (mouse origin)
Isotype	Mouse IgG1, kappa
Clone Name	39f
Purity	Protein G affinity chromatography
UniProt	P46100
Localization	Nuclear
Applications	Immunohistochemistry (FFPE) : 1-2ug/ml for 30 min at RT
Limitations	This ATRX antibody is available for research use only.



IHC testing of FFPE human pancreas with ATRX antibody (clone 39f). Required HIER: steam section in pH6 citrate buffer for 20 min and allow to cool prior to staining.



SDS-PAGE analysis of purified, BSA-free ATRX antibody (clone 39f) as confirmation of integrity and purity.

Description

ATRX is a member of the Snf2 family of helicase/ATPases, which contribute to the remodeling of the nucleosome structure in an ATP-dependent manner, and facilitate the initiation of transcription and replication. Structurally, it contains a PHD zinc finger motif. ATRX is regulated throughout the cell cycle where it is differentially distributed within the nucleus. During interphase, it predominately associates with the nuclear matrix, while during mitosis, ATRX localizes with condensed chromatin. At the onset of M phase, phosphorylation rapidly induces this redistribution of ATRX to the short arms of human acrocentric chromosomes, where it then specifically complexes with heterochromatin protein 1 to mediate chromosomal segregation. Mutations in the gene correlate with a high incidence of severe X-linked form of syndromal mental retardation associated with alpha-thalassemia or ATRX syndrome.

Application Notes

The concentration stated for each application is a general starting point. Variations in protocols, secondaries and substrates may require the ATRX antibody to be titrated up or down for optimal performance.

1. The prediluted format is supplied in a dropper bottle and is optimized for use in IHC. After epitope retrieval step (if required), drip mAb solution onto the tissue section and incubate at RT for 30 min.

Immunogen

Recombinant human ATRX protein was used as the immunogen for this ATRX antibody.

Storage

Store the ATRX antibody at 2-8°C (with azide) or aliquot and store at -20°C or colder (without azide).