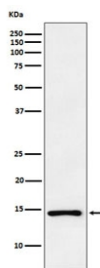


Atrial Natriuretic Peptide Antibody / ANP / ANF [clone ADHD-14] (RQ4872)

Catalog No.	Formulation	Size
RQ4872	Antibody in PBS with 0.02% sodium azide, 50% glycerol and 0.4-0.5mg/ml BSA	100 ul

[Bulk quote request](#)

Availability	1-2 weeks
Species Reactivity	Human
Format	Purified
Host	Rabbit
Clonality	Rabbit Monoclonal
Isotype	Rabbit IgG
Clone Name	ADHD-14
Purity	Affinity purified
UniProt	P01160
Applications	Western Blot : 1:500-1:2000
Limitations	This Atrial Natriuretic Peptide antibody is available for research use only.



Atrial Natriuretic Peptide Antibody PC-3 WB. Western blot analysis of human PC-3 cell lysate using Atrial Natriuretic Peptide antibody demonstrates a distinct immunoreactive band at approximately 15-17 kDa, consistent with the expected molecular weight of Atrial Natriuretic Peptide (ANP/ANF). ANP is a peptide hormone encoded by the NPPA gene that functions as an important regulator of cardiovascular homeostasis, fluid balance, and natriuretic peptide signaling. The detected band supports expression of ANP-associated protein in human cells and demonstrates the utility of this antibody for studies of cardiac hormone biology, endocrine signaling pathways, and natriuretic peptide regulation. Predicted molecular weight: ~17 kDa.

Description

Atrial Natriuretic Peptide Antibody is designed for the detection and study of Atrial Natriuretic Peptide (ANP), a biologically active peptide hormone encoded by the NPPA gene and produced primarily by cardiac tissue. ANP functions as a key endocrine mediator that helps regulate cardiovascular homeostasis through signaling pathways that coordinate communication between the heart, kidneys, vasculature, and other organ systems. Its role as a cardiac-derived hormone

has established ANP as an important marker for investigations of cardiovascular physiology and endocrine regulation.

ANP is generated through proteolytic processing of a larger precursor protein and is released by cardiac cells in response to physiologic stimuli affecting circulatory function. Following secretion, ANP interacts with natriuretic peptide receptors to activate signaling pathways involved in fluid balance, vascular regulation, and systemic homeostasis. These biologic activities place ANP at the center of endocrine mechanisms that help maintain normal cardiovascular function and physiologic adaptation.

As one of the best-characterized members of the natriuretic peptide family, ANP has been widely studied in cardiovascular biology, cardiac development, endocrine communication, and hormone-mediated signaling. The peptide serves as an important link between cardiac function and systemic regulation, highlighting the role of the heart as both a mechanical and endocrine organ. Research involving ANP has contributed significantly to understanding how peptide hormones coordinate physiologic responses across multiple tissues and organ systems.

Beyond cardiovascular physiology, ANP signaling pathways have attracted interest in studies of developmental biology, tissue homeostasis, renal regulation, and cellular communication. Because natriuretic peptides participate in complex endocrine networks, ANP remains an important target for investigations examining the molecular mechanisms that govern inter-organ communication and systemic physiologic balance.

Atrial Natriuretic Peptide Antibody is useful for investigating cardiovascular signaling, cardiac hormone biology, endocrine regulation, natriuretic peptide pathways, and physiologic homeostasis. Researchers utilize Atrial Natriuretic Peptide Antibody reagents to evaluate protein expression patterns and study molecular mechanisms governing cardiovascular adaptation, endocrine communication, and hormone-mediated regulatory processes.

Learn more about atrial natriuretic peptide signaling, cardiovascular hormone regulation, and natriuretic factor biology on our [ANF Antibody](#) page.

Application Notes

Optimal dilution of the Atrial Natriuretic Peptide antibody should be determined by the researcher.

Immunogen

A synthetic peptide specific to human Atrial Natriuretic Peptide / NPPA was used as the immunogen for the Atrial Natriuretic Peptide antibody.

Storage

Store the Atrial Natriuretic Peptide antibody at -20oC.

Alternate Names

Atrial Natriuretic Peptide Antibody, ANP Antibody, ANF Antibody, NPPA Antibody, Atrial Natriuretic Factor Antibody, Natriuretic Peptide A Antibody, Cardiac Hormone Antibody

