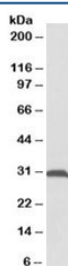


ATPG Antibody (R36210)

Catalog No.	Formulation	Size
R36210-100UG	0.5 mg/ml in 1X TBS, pH7.3, with 0.5% BSA (US sourced) and 0.02% sodium azide	100 ug

[Bulk quote request](#)

Availability	1-3 business days
Species Reactivity	Human, Mouse, Rat
Predicted Reactivity	Cow, Dog
Format	Antigen affinity purified
Clonality	Polyclonal (goat origin)
Isotype	Goat Ig
Purity	Antigen affinity
Gene ID	509
Applications	Western Blot : 0.1-0.3ug/ml ELISA (peptide) LOD : 1:128000
Limitations	This ATPG antibody is available for research use only.



Western blot testing of rat skeletal muscle lysate with ATPG antibody at 0.1ug/ml.
Predicted molecular weight: ~33kDa.

Description

Additional name(s) for this target protein: ATP5C1; ATP synthase subunit gamma

Application Notes

Optimal dilution of the ATPG antibody should be determined by the researcher.

Immunogen

Amino acids TLKDITRRLKSIKN were used as the immunogen for this ATPG antibody.

Storage

Aliquot and store the ATPG antibody at -20oC.