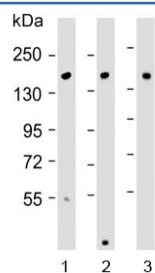


ATP7B Antibody (F54249)

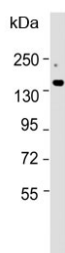
Catalog No.	Formulation	Size
F54249-0.4ML	In 1X PBS, pH 7.4, with 0.09% sodium azide	0.4 ml
F54249-0.08ML	In 1X PBS, pH 7.4, with 0.09% sodium azide	0.08 ml

[Bulk quote request](#)

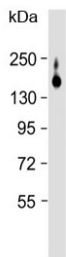
Species Reactivity	Human, Mouse
Format	Purified
Host	Rabbit
Clonality	Polyclonal (rabbit origin)
Isotype	Rabbit Ig
Purity	Protein A purified
UniProt	P35670
Gene ID	540
Applications	Western Blot : 1:1000-1:2000 Immunohistochemistry (FFPE) : 1:25-1:50 Immunofluorescence : 1:25
Limitations	This ATP7B antibody is available for research use only.



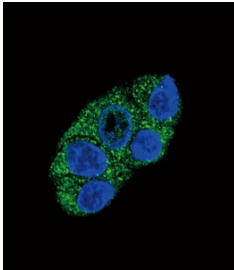
Western blot testing of 1) human Caco-2, 2) mouse kidney and 3) rat liver lysate with ATP7B antibody. Expected molecular weight: 140-157 kDa.



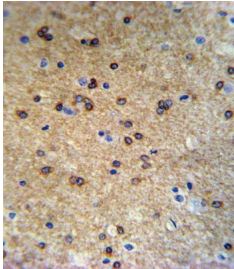
Western blot testing of mouse liver lysate with ATP7B antibody. Expected molecular weight: 140-157 kDa.



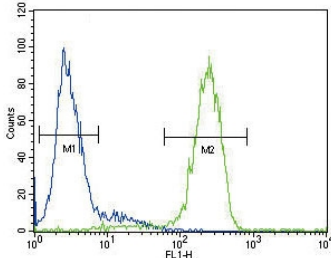
Western blot testing of rat liver lysate with ATP7B antibody. Expected molecular weight: 140-157 kDa.



Immunofluorescent staining of fixed and permeabilized human HepG2 cells with ATP7B antibody (green) and DAPI nuclear stain (blue).



IHC testing of FFPE mouse brain tissue with ATP7B antibody. HIER: steam section in pH6 citrate buffer for 20 min and allow to cool prior to staining.



Flow cytometry testing of fixed and permeabilized human HepG2 cells with ATP7B antibody; Blue=isotype control, Green= ATP7B antibody.

Description

ATP7B is a member of the P-type cation transport ATPase family and a protein with several membrane-spanning domains, an ATPase consensus sequence, a hinge domain, a phosphorylation site, and at least 2 putative copper-binding sites. This protein functions as a monomer, exporting copper out of the cells, such as the efflux of hepatic copper into the bile.

Application Notes

The stated application concentrations are suggested starting points. Titration of the ATP7B antibody may be required due to differences in protocols and secondary/substrate sensitivity.

Immunogen

A portion of amino acids 1361-1391 from the human protein were used as the immunogen for the ATP7B antibody.

Storage

Aliquot the ATP7B antibody and store frozen at -20oC or colder. Avoid repeated freeze-thaw cycles.

