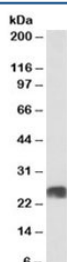


ATP5F1 Antibody (R35930)

Catalog No.	Formulation	Size
R35930-100UG	0.5 mg/ml in 1X TBS, pH7.3, with 0.5% BSA (US sourced) and 0.02% sodium azide	100 ug

[Bulk quote request](#)

Availability	1-3 business days
Species Reactivity	Human
Format	Antigen affinity purified
Host	Goat
Clonality	Polyclonal (goat origin)
Isotype	Goat Ig
Purity	Antigen affinity
Gene ID	515
Applications	Western Blot : 0.03-0.1ug/ml ELISA (peptide) LOD : 1:128000
Limitations	This ATP5F1 antibody is available for research use only.



Western blot testing of human heart lysate with ATP5F1 antibody at 0.03ug/ml.
Predicted molecular weight: ~29kDa but can be observed at 25kDa.

Description

Additional name(s) for this target protein: ATP synthase, H⁺ transporting, mitochondrial Fo complex, subunit B1

Application Notes

Optimal dilution of the ATP5F1 antibody should be determined by the researcher.

Immunogen

Amino acids SIQHIQNDAIDTE were used as the immunogen for this ATP5F1 antibody.

Storage

Aliquot and store the ATP5F1 antibody at -20oC.