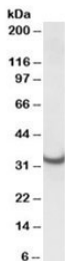


## ATP5C1 Antibody (R36220)

Catalog No.	Formulation	Size
R36220-100UG	0.5 mg/ml in 1X TBS, pH7.3, with 0.5% BSA (US sourced) and 0.02% sodium azide	100 ug

[Bulk quote request](#)

<b>Availability</b>	1-3 business days
<b>Species Reactivity</b>	Human, Rat
<b>Predicted Reactivity</b>	Cow, Dog, Mouse
<b>Format</b>	Antigen affinity purified
<b>Host</b>	Goat
<b>Clonality</b>	Polyclonal (goat origin)
<b>Isotype</b>	Goat Ig
<b>Purity</b>	Antigen affinity
<b>Gene ID</b>	509
<b>Applications</b>	Western Blot : 0.01-0.03ug/ml ELISA (peptide) LOD : 1:128000
<b>Limitations</b>	This ATP5C1 antibody is available for research use only.



Western blot testing of rat heart lysate with ATP5C1 antibody at 0.01ug/ml.  
Predicted/observed molecular weight: ~33kDa.

### Description

Additional name(s) for this target protein: ATP synthase, H<sup>+</sup> transporting, mitochondrial F1 complex, gamma polypeptide 1; ATPG

### Application Notes

Optimal dilution of the ATP5C1 antibody should be determined by the researcher.

## **Immunogen**

Amino acids TLTFNRTRQAVITKE were used as the immunogen for this ATP5C1 antibody.

## **Storage**

Aliquot and store the ATP5C1 antibody at -20oC.