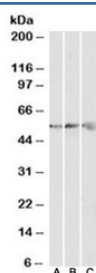


ATP5B Antibody (R33915)

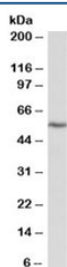
Catalog No.	Formulation	Size
R33915-100UG	0.5 mg/ml in 1X TBS, pH7.3, with 0.5% BSA (US sourced) and 0.02% sodium azide	100 ug

[Bulk quote request](#)

Availability	1-3 business days
Species Reactivity	Human, Mouse, Rat, Pig
Format	Antigen affinity purified
Clonality	Polyclonal (goat origin)
Isotype	Goat Ig
Purity	Antigen affinity
Gene ID	506
Applications	Western Blot : 0.3-1ug/ml ELISA (peptide) LOD : 1:4000
Limitations	This ATP5B antibody is available for research use only.



Western blot testing of human [A], mouse [B] and rat [C] heart lysates with ATP5B antibody at 0.3ug/ml. Predicted molecular weight: ~56kDa.



Western blot of pig heart lysate with ATP5B antibody at 0.3ug/ml. Predicted molecular weight: ~56kDa.

Description

Additional name(s) for this target protein: ATP synthase beta subunit

Application Notes

Optimal dilution of the ATP5B antibody should be determined by the researcher.

Immunogen

Amino acids EPIDERGPIKTKQ were used as the immunogen for this ATP5B antibody.

Storage

Aliquot and store the ATP5B antibody at -20oC.