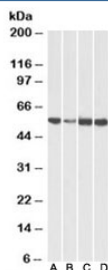


ATP5A1 Antibody / ATP5F1A (R35804)

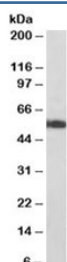
Catalog No.	Formulation	Size
R35804-100UG	0.5 mg/ml in 1X TBS, pH7.3, with 0.5% BSA (US sourced) and 0.02% sodium azide	100 ug

[Bulk quote request](#)

Availability	1-3 business days
Species Reactivity	Human, Mouse, Rat, Pig
Predicted Reactivity	Dog
Format	Antigen affinity purified
Host	Goat
Clonality	Polyclonal (goat origin)
Isotype	Goat Ig
Purity	Antigen affinity
Gene ID	498
Applications	Western Blot : 0.01-0.03ug/ml ELISA (peptide) LOD : 1:128000
Limitations	This ATP5A1 antibody is available for research use only.



Western blot testing of human [A], fetal mouse [B], adult mouse [C] and adult rat [D] heart lysates with ATP5A1 antibody at 0.01ug/ml. Predicted molecular weight ~54-60 kDa (multiple isoforms).



Western blot of pig heart lysates with ATP5A1 antibody at 0.01ug/ml. Predicted molecular weight ~54-60 kDa (multiple isoforms).

Description

Additional name(s) for this target protein: ATP synthase subunit alpha

Application Notes

Optimal dilution of the ATP5A1 antibody should be determined by the researcher.

Immunogen

Amino acids RVHGLRNVQAEE were used as the immunogen for this ATP5A1 antibody.

Storage

Aliquot and store the ATP5A1 antibody at -20oC.