

ATP2A3 Antibody (R30157)

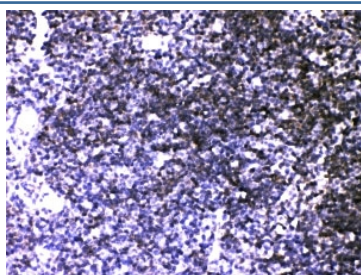
Catalog No.	Formulation	Size
R30157	0.5mg/ml if reconstituted with 0.2ml sterile DI water	100 ug

Bulk quote request

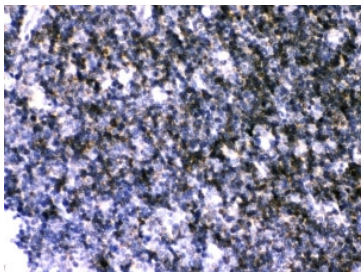
Availability	1-3 business days
Species Reactivity	Human, Mouse, Rat
Format	Antigen affinity purified
Host	Rabbit
Clonality	Polyclonal (rabbit origin)
Isotype	Rabbit IgG
Purity	Antigen affinity
Buffer	Lyophilized from 1X PBS with 2.5% BSA and 0.025% sodium azide
Gene ID	489
Applications	Western Blot : 0.5-1ug/ml IHC (FFPE) : 0.5-1ug/ml
Limitations	This ATP2A3 antibody is available for research use only.



Western blot testing of ATP2A3 antibody and Lane 1: rat skeletal muscle; 2: mouse skeletal muscle; Predicted size: 114KD; Observed size: 114KD



IHC-P: ATP2A3 antibody testing of mouse thymus tissue



IHC-P: ATP2A3 antibody testing of rat thymus tissue

Description

Sarcoplasmic/endoplasmic reticulum calcium ATPase 3, also known as SERCA3, is an enzyme that in humans is encoded by the ATP2A3 gene. It is mapped to 17p13.2. This gene encodes one of the SERCA Ca^{2+} -ATPases, which are intracellular pumps located in the sarcoplasmic or endoplasmic reticula of cells. ATP2A3 expression was originally described as non-muscular, but was recently observed in cardiomyocyte. What's more, the expression of ATP2A3 was significantly reduced or lost in colon carcinomas compared with normal colonic epithelial cells. This enzyme catalyzes the hydrolysis of ATP coupled with the translocation of calcium from the cytosol to the sarcoplasmic reticulum lumen, and is involved in calcium sequestration associated with muscular excitation and contraction.

Application Notes

The stated application concentrations are suggested starting amounts. Titration of the ATP2A3 antibody may be required due to differences in protocols and secondary/substrate sensitivity.

Immunogen

An amino acid sequence from the N-terminus of human ATP2A3 (MEAAHLLPAADVLRHFSVTAEGGLSPAQVT) was used as the immunogen for this ATP2A3 antibody.

Storage

After reconstitution, the ATP2A3 antibody can be stored for up to one month at 4°C. For long-term, aliquot and store at -20°C. Avoid repeated freezing and thawing.