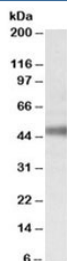


ATP1B1 Antibody (R34662)

Catalog No.	Formulation	Size
R34662-100UG	0.5 mg/ml in 1X TBS, pH7.3, with 0.5% BSA (US sourced) and 0.02% sodium azide	100 ug

[Bulk quote request](#)

Availability	1-3 business days
Species Reactivity	Human, Mouse, Rat
Predicted Reactivity	Cow, Dog, Pig
Format	Antigen affinity purified
Host	Goat
Clonality	Polyclonal (goat origin)
Isotype	Goat Ig
Purity	Antigen affinity
Gene ID	481
Applications	Western Blot : 0.1-0.3ug/ml ELISA (peptide) LOD : 1:128000
Limitations	This ATP1B1 antibody is available for research use only.



Western blot testing of rat retina lysate with ATP1B1 antibody at 0.1ug/ml. Predicted molecular weight: ~35/45-50kDa (unmodified/glycosylated).

Description

Additional name(s) for this target protein: ATPase, Na⁺/K⁺ transporting, beta 1

Application Notes

Optimal dilution of the ATP1B1 antibody should be determined by the researcher.

Immunogen

Amino acids KTEISFRPNDPKSYE were used as the immunogen for this ATP1B1 antibody.

Storage

Aliquot and store the ATP1B1 antibody at -20oC.