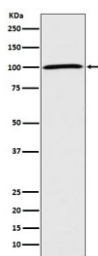


## ATP1A1 Antibody / Sodium Potassium ATPase [clone AID-1] (RQ5096)

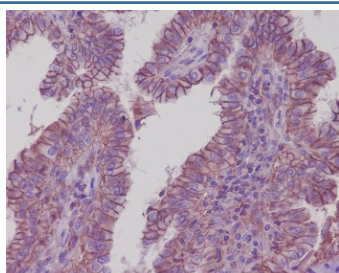
Catalog No.	Formulation	Size
RQ5096	Antibody in PBS with 0.02% sodium azide, 50% glycerol and 0.4-0.5mg/ml BSA	100 ul

[Bulk quote request](#)

Availability	1-2 weeks
Species Reactivity	Human
Format	Purified
Host	Rabbit
Clonality	Rabbit Monoclonal
Isotype	Rabbit IgG
Clone Name	AID-1
Purity	Affinity purified
UniProt	P05023
Applications	Western Blot : 1:500-1:2000 Immunohistochemistry (FFPE) : 1:50-1:200
Limitations	This ATP1A1 antibody is available for research use only.



Western blot testing of human HeLa cell lysate with ATP1A1 antibody. Predicted molecular weight ~113 kDa.



IHC staining of FFPE human thyroid carcinoma with ATP1A1 antibody. HIER: boil tissue sections in pH6, 10mM citrate buffer, for 10-20 min and allow to cool before testing.

## Description

The protein encoded by this gene belongs to the family of P-type cation transport ATPases, and to the subfamily of Na<sup>+</sup>/K<sup>+</sup> -ATPases. Na<sup>+</sup>/K<sup>+</sup> -ATPase is an integral membrane protein responsible for establishing and maintaining the electrochemical gradients of Na and K ions across the plasma membrane. [RefSeq]

## Application Notes

Optimal dilution of the ATP1A1 antibody should be determined by the researcher.

## Immunogen

A synthetic peptide specific to human Sodium Potassium ATPase / ATP1A1 was used as the immunogen for the ATP1A1 antibody.

## Storage

Store the ATP1A1 antibody at -20oC.