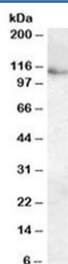


ATP13A1 Antibody (R35579)

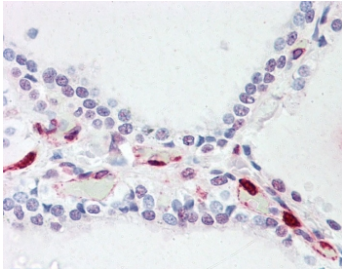
Catalog No.	Formulation	Size
R35579-100UG	0.5 mg/ml in 1X TBS, pH7.3, with 0.5% BSA (US sourced) and 0.02% sodium azide	100 ug

[Bulk quote request](#)

Availability	1-3 business days
Species Reactivity	Human
Predicted Reactivity	Mouse, Rat, Dog
Format	Antigen affinity purified
Host	Goat
Clonality	Polyclonal (goat origin)
Isotype	Goat Ig
Purity	Antigen affinity
UniProt	Q9HD20
Localization	Cytoplasmic, membranous
Applications	Western Blot : 0.3-1ug/ml IHC (FFPE) : 5ug/ml ELISA (peptide) LOD : 1:64000
Limitations	This ATP13A1 antibody is available for research use only.



Western blot testing of human kidney lysate with ATP13A1 antibody at 0.3ug/ml.
Predicted molecular weight: ~133/121/38 kDa (isoforms A/B/C).



IHC testing of FFPE human thyroid with ATP13A1 antibody at 5ug/ml. Required HIER: steamed antigen retrieval with pH6 citrate buffer; AP-staining.

Description

Additional name(s) for this target protein: ATPase type 13A1

Application Notes

Optimal dilution of the ATP13A1 antibody should be determined by the researcher.

Immunogen

Amino acids REAQARSPEKQEQ were used as the immunogen for this ATP13A1 antibody. This sequence is common to isoforms A/B/C.

Storage

Aliquot and store the ATP13A1 antibody at -20oC.