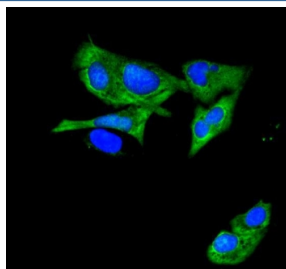


ATP11C Antibody / Phospholipid-transporting ATPase IG (RQ6040)

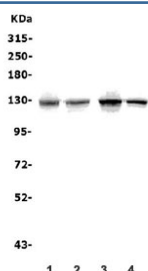
Catalog No.	Formulation	Size
RQ6040	0.5mg/ml if reconstituted with 0.2ml sterile DI water	100 ug

Bulk quote request

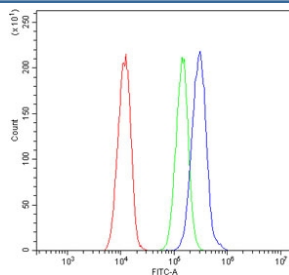
Availability	1-3 business days
Species Reactivity	Human
Format	Antigen affinity purified
Clonality	Polyclonal (rabbit origin)
Isotype	Rabbit IgG
Purity	Affinity purified
Buffer	Lyophilized from 1X PBS with 2% Trehalose and 0.025% sodium azide
UniProt	Q8NB49
Localization	Cytoplasmic, plasma membrane
Applications	Western Blot : 0.5-1ug/ml Immunofluorescence : 2-4ug/ml Flow Cytometry : 1-3ug/million cells
Limitations	This ATP11C antibody is available for research use only.



Immunofluorescent staining of FFPE human U-2 OS cells with ATP11C antibody (green) and DAPI nuclear stain (blue). HIER: steam section in pH6 citrate buffer for 20 min.



Western blot testing of human 1) HEK293, 2) K562, 3) PC-3 and 4) HeLa lysate with ATP11C antibody. Predicted molecular weight ~129 kDa.



Flow cytometry testing of human A549 cells with ATP11C antibody at 1ug/million cells (blocked with goat sera); Red=cells alone, Green=isotype control, Blue= ATP11C antibody.

Description

ATP11C is an enzyme that in humans is encoded by the ATP11C gene. This gene is mapped to Xq27.1.

Application Notes

Optimal dilution of the ATP11C antibody should be determined by the researcher.

Immunogen

Amino acids QNHEIELTKVHVERNAMDGYRTLCAVAFKEIAPDDYER from the human protein were used as the immunogen for the ATP11C antibody.

Storage

After reconstitution, the ATP11C antibody can be stored for up to one month at 4oC. For long-term, aliquot and store at -20oC. Avoid repeated freezing and thawing.