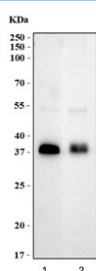


## ATOH1 Antibody / MATH1 (N-Terminal Region) (R32923)

Catalog No.	Formulation	Size
R32923	0.5mg/ml if reconstituted with 0.2ml sterile DI water	100 ug

**Bulk quote request**

<b>Availability</b>	1-3 business days
<b>Species Reactivity</b>	Human, Rat
<b>Format</b>	Antigen affinity purified
<b>Clonality</b>	Polyclonal (rabbit origin)
<b>Isotype</b>	Rabbit IgG
<b>Purity</b>	Antigen affinity
<b>Buffer</b>	Lyophilized from 1X PBS with 2% Trehalose
<b>UniProt</b>	Q92858
<b>Applications</b>	Western Blot : 0.5-1ug/ml
<b>Limitations</b>	This ATOH1 antibody is available for research use only.



Western blot testing of 1) human HL60 and 2) rat PC-12 cell lysate with ATOH1 antibody. Predicted molecular weight ~38 kDa.

## Description

Protein atonal homolog 1 is a protein that in humans is encoded by the ATOH1 gene. This protein belongs to the basic helix-loop-helix (BHLH) family of transcription factors. It activates E-box dependent transcription along with E47. ATOH1 is required for the formation of both neural and non-neural cell types. Using genetic deletion in mice, Atoh1 has been shown to be essential for formation of cerebellar granule neurons, inner ear hair cells, spinal cord interneurons, Merkel cells of the skin, and intestinal secretory cells (goblet, enteroendocrine, and Paneth cells).

## Application Notes

Optimal dilution of the ATOH1 antibody should be determined by the researcher.

## Immunogen

Amino acids 1-30 (MSRLLHAE EWAEVKELGDHHRQPQPHLPQ) were used as the immunogen for the ATOH1 antibody.

## Storage

After reconstitution, the ATOH1 antibody can be stored for up to one month at 4°C. For long-term, aliquot and store at -20°C. Avoid repeated freezing and thawing.