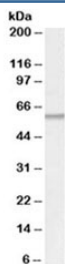


## ATGL Antibody / PNPLA2 (R34823)

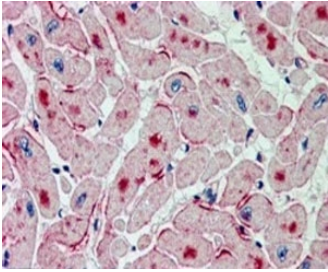
Catalog No.	Formulation	Size
R34823-100UG	0.5 mg/ml in 1X TBS, pH7.3, with 0.5% BSA (US sourced) and 0.02% sodium azide	100 ug

[Bulk quote request](#)

<b>Availability</b>	1-3 business days
<b>Species Reactivity</b>	Human
<b>Predicted Reactivity</b>	Mouse, Rat, Dog, Pig, Cow
<b>Format</b>	Antigen affinity purified
<b>Host</b>	Goat
<b>Clonality</b>	Polyclonal (goat origin)
<b>Isotype</b>	Goat Ig
<b>Purity</b>	Antigen affinity
<b>Gene ID</b>	57104
<b>Localization</b>	Lipid droplet, cell membrane
<b>Applications</b>	Western Blot : 0.5-2ug/ml Immunohistochemistry (FFPE) : 2-3ug/ml ELISA (peptide) LOD : 1:32000
<b>Limitations</b>	This ATGL antibody is available for research use only.



Western blot testing of human adipose lysate with ATGL antibody at 0.5ug/ml. Predicted molecular weight ~55 kDa.



IHC staining of FFPE human heart with ATGL antibody at 2.5ug/ml. HIER: steamed with pH6 citrate buffer, AP-staining. Staining of distinct spots in the myocardial fibers (transverse section) is seen.

## Description

Additional name(s) for this target protein: Adipose triglyceride lipase, Desnutrin; PNPLA2

## Application Notes

Optimal dilution of the ATGL antibody should be determined by the researcher.

## Immunogen

Amino acids NIIEVSKEARKR were used as the immunogen for this ATGL antibody.

## Storage

Aliquot and store the ATGL antibody at -20oC.