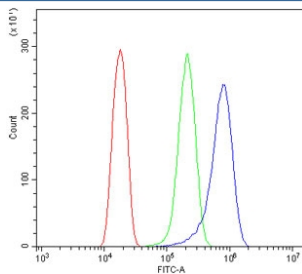


## ATG7 Antibody (RQ5947)

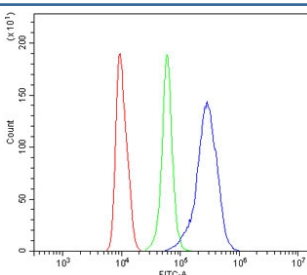
Catalog No.	Formulation	Size
RQ5947	0.5mg/ml if reconstituted with 0.2ml sterile DI water	100 ug

[Bulk quote request](#)

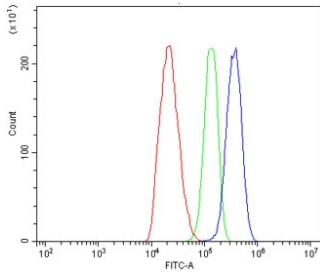
<b>Availability</b>	1-3 business days
<b>Species Reactivity</b>	Human, Mouse, Rat
<b>Format</b>	Antigen affinity purified
<b>Host</b>	Rabbit
<b>Clonality</b>	Polyclonal (rabbit origin)
<b>Isotype</b>	Rabbit IgG
<b>Purity</b>	Affinity purified
<b>Buffer</b>	Lyophilized from 1X PBS with 2% Trehalose and 0.025% sodium azide
<b>UniProt</b>	O95352
<b>Applications</b>	Western Blot : 0.5-1ug/ml Immunohistochemistry : 1-2ug/ml Flow Cytometry : 1-3ug/million cells
<b>Limitations</b>	This ATG7 antibody is available for research use only.



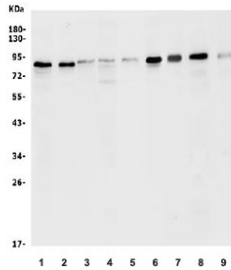
Flow cytometry testing of human HeLa cells with ATG7 antibody at 1ug/million cells (blocked with goat sera); Red=cells alone, Green=isotype control, Blue= ATG7 antibody.



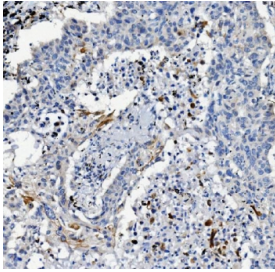
Flow cytometry testing of mouse RAW264.7 cells with ATG7 antibody at 1ug/million cells (blocked with goat sera); Red=cells alone, Green=isotype control, Blue= ATG7 antibody.



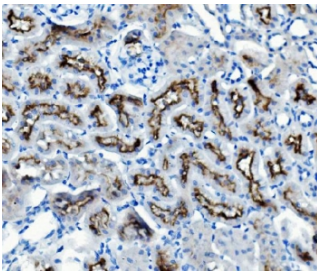
Flow cytometry testing of rat C6 cells with ATG7 antibody at 1ug/million cells (blocked with goat sera); Red=cells alone, Green=isotype control, Blue= ATG7 antibody.



Western blot testing of human 1) Caco-2, 2) U-2 OS, 3) HepG2, 4) HEK293, 5) HeLa, 6) K562, 7) rat thymus, 8) rat spleen and 9) mouse SP2/0 lysate with ATG7 antibody. Predicted molecular weight: 70-80 kDa.



IHC staining of FFPE human lung cancer with ATG7 antibody. HIER: boil tissue sections in pH8 EDTA for 20 min and allow to cool before testing.



IHC staining of FFPE mouse kidney with ATG7 antibody. HIER: boil tissue sections in pH8 EDTA for 20 min and allow to cool before testing.

## Description

Autophagy related 7 is a protein in humans encoded by ATG7 gene. It is mapped to 3p25.3. This gene encodes an E1-like activating enzyme that is essential for autophagy and cytoplasmic to vacuole transport. The encoded protein is also thought to modulate p53-dependent cell cycle pathways during prolonged metabolic stress. It has been associated with multiple functions, including axon membrane trafficking, axonal homeostasis, mitophagy, adipose differentiation, and hematopoietic stem cell maintenance. Alternative splicing results in multiple transcript variants.

## Application Notes

Optimal dilution of the ATG7 antibody should be determined by the researcher.

## Immunogen

Amino acids HELTQKKLNEYRLDEAPKDIK from the human protein were used as the immunogen for the ATG7 antibody.

## Storage

After reconstitution, the ATG7 antibody can be stored for up to one month at 4oC. For long-term, aliquot and store at

-20oC. Avoid repeated freezing and thawing.