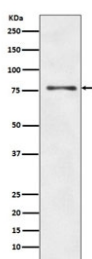


ATG7 Antibody [clone FCA-1] (RQ4806)

Catalog No.	Formulation	Size
RQ4806	Antibody in PBS with 0.02% sodium azide, 50% glycerol and 0.4-0.5mg/ml BSA	100 ul

[Bulk quote request](#)

Availability	1-2 weeks
Species Reactivity	Human
Format	Purified
Host	Rabbit
Clonality	Rabbit Monoclonal
Isotype	Rabbit IgG
Clone Name	FCA-1
Purity	Affinity purified
UniProt	O95352
Applications	Western Blot : 1:10000-1:50000
Limitations	This ATG7 antibody is available for research use only.



Western blot testing of human HepG2 cell lysate with ATG7 antibody. Predicted molecular weight: 70-80 kDa.

Description

ATG7 is an E1-like activating enzyme involved in the 2 ubiquitin-like systems required for cytoplasm to vacuole transport (Cvt) and autophagy. Activates ATG12 for its conjugation with ATG5 as well as the ATG8 family proteins for their conjugation with phosphatidylethanolamine. Both systems are needed for the ATG8 association to Cvt vesicles and autophagosomes membranes. [UniProt]

Application Notes

Optimal dilution of the ATG7 antibody should be determined by the researcher.

Immunogen

A synthetic peptide specific to human ATG7 was used as the immunogen for the ATG7 antibody.

Storage

Store the ATG7 antibody at -20oC.