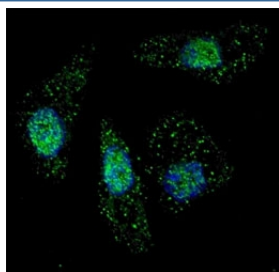


ATG7 Antibody (F46229)

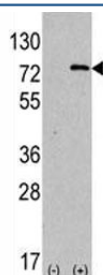
Catalog No.	Formulation	Size
F46229-0.4ML	In 1X PBS, pH 7.4, with 0.09% sodium azide	0.4 ml
F46229-0.08ML	In 1X PBS, pH 7.4, with 0.09% sodium azide	0.08 ml

Bulk quote request

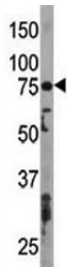
Availability	1-3 business days
Species Reactivity	Human, Mouse
Predicted Reactivity	Rat
Format	Purified
Clonality	Polyclonal (rabbit origin)
Isotype	Rabbit Ig
Purity	Purified
UniProt	O95352
Applications	Immunofluorescence : 1:200 Western Blot : 1:1000 IHC (Paraffin) : 1:50-1:100
Limitations	This ATG7 antibody is available for research use only.



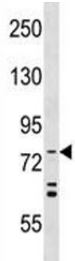
Fluorescent image of Chloroquine treated U251 cells stained with ATG7 antibody at 1:200. Immunoreactivity is localized to autophagic vacuoles in the cytoplasm.



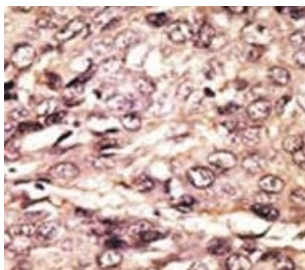
Western blot analysis of ATG7 antibody and 293 lysate transiently transfected with the human gene.



Western blot testing of ATG7 antibody and mouse liver tissue lysate. Predicted molecular weight: 70-80 kDa.



ATG7 antibody western blot analysis in HeLa lysate



IHC analysis of FFPE human hepatocarcinoma tissue stained with the ATG7 antibody

Description

Autophagy is a process of bulk degradation of cytoplasmic components by the lysosomal/vacuolar system. ATG7 is a ubiquitin-activating enzyme E1-like protein essential for the Apg12 conjugation system that mediates membrane fusion in autophagy. [OMIM]

Application Notes

Titration of the ATG7 antibody may be required due to differences in protocols and secondary/substrate sensitivity.

Immunogen

A portion of amino acids 494-523 from the human protein was used as the immunogen for this ATG7 antibody.

Storage

Aliquot the ATG7 antibody and store frozen at -20°C or colder. Avoid repeated freeze-thaw cycles.

