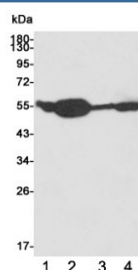


ATG5 Antibody [clone 8F1-2C11-D9] (F54059)

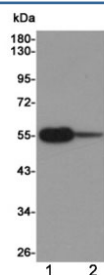
Catalog No.	Formulation	Size
F54059-0.1ML	In PBS with 50% glycerol and 0.03% ProClin 300	0.1 ml

Bulk quote request

Availability	1-3 business days
Species Reactivity	Human, Rat
Format	Purified
Clonality	Monoclonal (mouse origin)
Isotype	Mouse IgG1
Clone Name	8F1-2C11-D9
Purity	Protein G affinity
UniProt	Q9H1Y0
Applications	Western Blot : 1:1000
Limitations	This ATG5 antibody is available for research use only.



Western blot testing of 1) huma HCT116, 2) rat brain, 3) human K562 and 4) rat C6 cell lysates using ATG5 antibody at 1:1000. Predicted molecular weight ATG5: ~32 kDa; ATG5/ATG12 heterodimer: ~56 kDa.



Western blot testing of 1) rat brain and 2) human C2C12 cell lysates using ATG5 antibody at 1:1000. Predicted molecular weight ATG5: ~32 kDa; ATG5/ATG12 heterodimer: ~56 kDa.

Description

Required for autophagy. Conjugates to ATG12 and associates with isolation membrane to form cup-shaped isolation membrane and autophagosome. The conjugate detaches from the membrane immediately before or after autophagosome formation is completed. May play

Application Notes

The stated application concentrations are suggested starting points. Titration of the ATG5 antibody may be required due to differences in protocols and secondary/substrate sensitivity.

Immunogen

A synthetic protein specific to ATG5 was used as the immunogen for the ATG5 antibody.

Storage

Store the ATG5 antibody at -20oC.