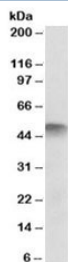


## ATG4C Antibody / APG4C (R33726)

Catalog No.	Formulation	Size
R33726-100UG	0.5 mg/ml in 1X TBS, pH7.3, with 0.5% BSA (US sourced) and 0.02% sodium azide	100 ug

[Bulk quote request](#)

<b>Availability</b>	1-3 business days
<b>Species Reactivity</b>	Human
<b>Predicted Reactivity</b>	Dog, Cow
<b>Format</b>	Antigen affinity purified
<b>Clonality</b>	Polyclonal (goat origin)
<b>Isotype</b>	Goat Ig
<b>Purity</b>	Antigen affinity
<b>Gene ID</b>	84938
<b>Applications</b>	Western Blot : 2-6ug/ml ELISA (peptide) LOD : 1:16000
<b>Limitations</b>	This ATG4C antibody is available for research use only.



Western blot testing of human skeletal muscle lysate with ATG4C antibody at 2ug/ml.  
Predicted molecular weight: ~52kDa.

### Description

Additional name(s) for this target protein: ATG4 autophagy related 4 homolog C

### Application Notes

Optimal dilution of the ATG4C antibody should be determined by the researcher.

### Immunogen

Amino acids EDEKKQLKRFSTEE were used as the immunogen for this ATG4C antibody.

## **Storage**

Aliquot and store the ATG4C antibody at -20oC.