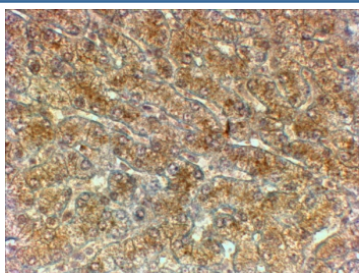


## ATG4A Antibody (R36152)

Catalog No.	Formulation	Size
R36152-100UG	0.5 mg/ml in 1X TBS, pH7.3, with 0.5% BSA (US sourced) and 0.02% sodium azide	100 ug

[Bulk quote request](#)

Availability	1-3 business days
Species Reactivity	Human
Format	Antigen affinity purified
Clonality	Polyclonal (goat origin)
Isotype	Goat Ig
Purity	Antigen affinity
Gene ID	115201
Applications	Immunohistochemistry (FFPE) : 2-4ug/ml ELISA (peptide) LOD : 1:1000
Limitations	This ATG4A antibody is available for research use only.



IHC testing of FFPE human liver with ATG4A antibody at 2ug/ml. HIER: steamed with pH6 citrate buffer, HRP-staining.

### Description

Additional name(s) for this target protein: Autophagy related 4A

### Application Notes

Optimal dilution of the ATG4A antibody should be determined by the researcher.

### Immunogen

Amino acids TEENGTVNDQTFHC were used as the immunogen for this ATG4A antibody.

## Storage

Aliquot and store the ATG4A antibody at -20oC.