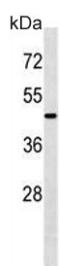


ATG4A Antibody (F54713)

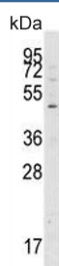
Catalog No.	Formulation	Size
F54713-0.4ML	In 1X PBS, pH 7.4, with 0.09% sodium azide	0.4 ml
F54713-0.08ML	In 1X PBS, pH 7.4, with 0.09% sodium azide	0.08 ml

[Bulk quote request](#)

Availability	1-3 business days
Species Reactivity	Human, Mouse
Format	Purified
Host	Rabbit
Clonality	Polyclonal (rabbit origin)
Isotype	Rabbit Ig
Purity	Purified
UniProt	Q8WYN0
Applications	Western Blot : 1:500-1:2000 Immunohistochemistry (FFPE) : 1:25
Limitations	This ATG4A antibody is available for research use only.



Western blot testing of mouse kidney tissue lysate with ATG4A antibody. Predicted molecular weight ~45 kDa, commonly observed between 45-60 kDa.



Western blot testing of human Jurkat cell lysate with ATG4A antibody. Predicted molecular weight ~45 kDa, commonly observed between 45-60 kDa.



IHC testing of FFPE human skeletal muscle tissue with ATG4A antibody. HIER: steam section in pH6 citrate buffer for 20 min and allow to cool prior to staining.

Description

Macroautophagy is the major inducible pathway for the general turnover of cytoplasmic constituents in eukaryotic cells, it is also responsible for the degradation of active cytoplasmic enzymes and organelles during nutrient starvation.

Macroautophagy involves the formation of double-membrane bound autophagosomes which enclose the cytoplasmic constituent targeted for degradation in a membrane bound structure, which then fuse with the lysosome (or vacuole) releasing a single-membrane bound autophagic bodies which are then degraded within the lysosome (or vacuole).

APG4A is a cysteine protease required for autophagy, which cleaves the C-terminal part of either MAP1LC3, GABARAPL2 or GABARAP, allowing the liberation of form I. A subpopulation of form I is subsequently converted to a smaller form (form II). Form II, with a revealed C-terminal glycine, is considered to be the phosphatidylethanolamine (PE)-conjugated form, and has the capacity for the binding to autophagosomes. Preferred substrate is GABARAPL2 followed by MAP1LC3A and GABARAP.

Application Notes

The stated application concentrations are suggested starting points. Titration of the ATG4A antibody may be required due to differences in protocols and secondary/substrate sensitivity.

Immunogen

A portion of amino acids 363-392 from the human protein was used as the immunogen for the ATG4A antibody.

Storage

Aliquot the ATG4A antibody and store frozen at -20oC or colder. Avoid repeated freeze-thaw cycles.