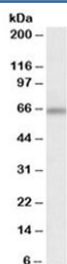


ATG16L1 Antibody (R34681)

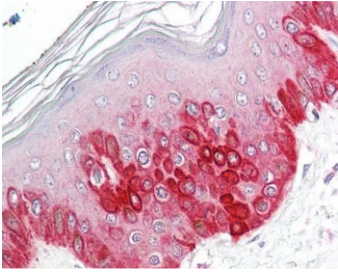
Catalog No.	Formulation	Size
R34681-100UG	0.5 mg/ml in 1X TBS, pH7.3, with 0.5% BSA (US sourced) and 0.02% sodium azide	100 ug

[Bulk quote request](#)

Availability	1-3 business days
Species Reactivity	Human, Mouse
Predicted Reactivity	Rat, Dog
Format	Antigen affinity purified
Host	Goat
Clonality	Polyclonal (goat origin)
Isotype	Goat Ig
Purity	Antigen affinity
Gene ID	55054
Localization	Cytoplasmic
Applications	Western Blot : 0.01-0.1ug/ml IHC (FFPE) : 3.75ug/ml ELISA (peptide) LOD : 1:32000
Limitations	This ATG16L1 antibody is available for research use only.



Western blot testing of mouse brain lysate with ATG16L1 antibody at 0.1ug/ml. Predicted molecular weight ~68 kDa.



IHC testing of FFPE human skin tissue with ATG16L1 antibody at 3.75ug/ml. Required HIER: steamed antigen retrieval with pH6 citrate buffer; AP-staining.

Description

Additional name(s) for this target protein: Autophagy related 16-like 1

Application Notes

Optimal dilution of the ATG16L1 antibody should be determined by the researcher.

Immunogen

Amino acids KVEKVLSKQHSSSIN were used as the immunogen for this ATG16L1 antibody.

Storage

Aliquot and store the ATG16L1 antibody at -20oC.