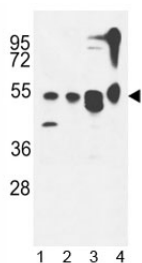


ATG13 Antibody (F52000)

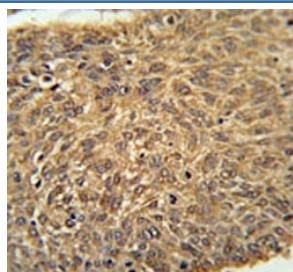
Catalog No.	Formulation	Size
F52000-0.4ML	In 1X PBS, pH 7.4, with 0.09% sodium azide	0.4 ml
F52000-0.08ML	In 1X PBS, pH 7.4, with 0.09% sodium azide	0.08 ml

[Bulk quote request](#)

Availability	1-3 business days
Species Reactivity	Human
Predicted Reactivity	Bovine
Format	Antigen affinity purified
Clonality	Polyclonal (rabbit origin)
Isotype	Rabbit Ig
Purity	Antigen affinity
UniProt	O75143
Localization	Cytoplasmic
Applications	Western Blot : 1:1000 IHC (Paraffin) : 1:50-1:100
Limitations	This ATG13 antibody is available for research use only.



ATG13 antibody western blot analysis in 1) MDA-MB435, 2) CEM, 3) T47D cell line and 4) mouse cerebellum tissue lysate. Predicted molecular weight ~57kDa.



ATG13 antibody immunohistochemistry analysis in formalin fixed and paraffin embedded human lung carcinoma.

Description

ATG13 is an autophagy factor required for autophagosome formation and mitophagy. Target of the TOR kinase signaling pathway that regulates autophagy through the control of the phosphorylation status of ATG13 and ULK1, and the regulation of the ATG13-ULK1-RB1CC1 complex. Through its regulation of ULK1 activity, plays a role in the regulation of the kinase activity of mTORC1 and cell proliferation. [UniProt]

Application Notes

Titration of the ATG13 antibody may be required due to differences in protocols and secondary/substrate sensitivity.

Immunogen

A portion of amino acids 1-30 from the human protein was used as the immunogen for this ATG13 antibody.

Storage

Aliquot the ATG13 antibody and store frozen at -20oC or colder. Avoid repeated freeze-thaw cycles.