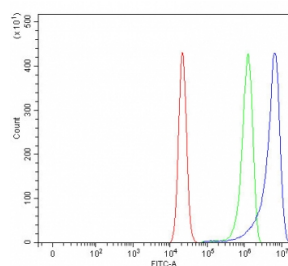


ATG12 Antibody (RQ7816)

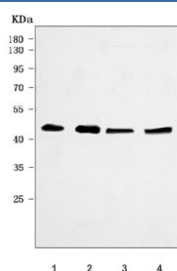
Catalog No.	Formulation	Size
RQ7816	0.5mg/ml if reconstituted with 0.2ml sterile DI water	100 ug

Bulk quote request

Availability	1-3 business days
Species Reactivity	Human
Format	Antigen affinity purified
Host	Rabbit
Clonality	Polyclonal (rabbit origin)
Isotype	Rabbit IgG
Purity	Antigen affinity purified
Buffer	Lyophilized from 1X PBS with 2% Trehalose
UniProt	O94817
Applications	Western Blot : 0.5-1ug/ml Flow Cytometry : 1-3ug/million cells Direct ELISA : 0.1-0.5ug/ml
Limitations	This ATG12 antibody is available for research use only.



Flow cytometry testing of human RT4 cells with ATG12 antibody at 1ug/million cells (blocked with goat sera); Red=cells alone, Green=isotype control, Blue= ATG12 antibody.



Western blot testing of human 1) PC-3, 2) COLO-320, 3) HeLa and 4) HepG2 cell lysate with ATG12 antibody. Expected molecular weight: ~15 kDa (ATG12) and 50-60 kDa (ATG12-ATG5 complex).

Description

Autophagy related 12 is a protein that in humans is encoded by the ATG12 gene. Autophagy is a process of bulk protein degradation in which cytoplasmic components, including organelles, are enclosed in double-membrane structures called autophagosomes and delivered to lysosomes or vacuoles for degradation. ATG12 is the human homolog of a yeast protein involved in autophagy.

Application Notes

Optimal dilution of the ATG12 antibody should be determined by the researcher.

Immunogen

E. coli-derived recombinant human protein (amino acids M68-Q99) was used as the immunogen for the ATG12 antibody.

Storage

After reconstitution, the ATG12 antibody can be stored for up to one month at 4°C. For long-term, aliquot and store at -20°C. Avoid repeated freezing and thawing.