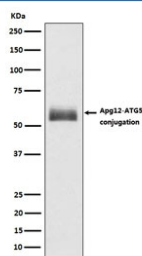


ATG12 Antibody [clone ABID-1] (RQ4798)

Catalog No.	Formulation	Size
RQ4798	Antibody in PBS with 0.02% sodium azide, 50% glycerol and 0.4-0.5mg/ml BSA	100 ul

[Bulk quote request](#)

Availability	1-2 weeks
Species Reactivity	Human
Format	Purified
Host	Rabbit
Clonality	Rabbit Monoclonal
Isotype	Rabbit IgG
Clone Name	ABID-1
Purity	Affinity purified
UniProt	O94817
Applications	Western Blot : 1:500-1:2000
Limitations	This ATG12 antibody is available for research use only.



Western blot testing of human HepG2 lysate with ATG12 antibody. Expected molecular weight: ~15 kDa (ATG12) and 50-60 kDa (ATG12-ATG5 complex).

Description

Ubiquitin-like protein involved in autophagy vesicles formation. Conjugation with ATG5 through a ubiquitin-like conjugating system involving also ATG7 as an E1-like activating enzyme and ATG10 as an E2-like conjugating enzyme, is essential for its function. The ATG12-ATG5 conjugate acts as an E3-like enzyme which is required for lipidation of ATG8 family proteins and their association to the vesicle membranes. [UniProt]

Application Notes

Optimal dilution of the ATG12 antibody should be determined by the researcher.

Immunogen

A synthetic peptide specific to human ATG12 was used as the immunogen for the ATG12 antibody.

Storage

Store the ATG12 antibody at -20oC.