

ATF7IP2 Antibody / MCAF2 (F54547)

Catalog No.	Formulation	Size
F54547-0.4ML	In 1X PBS, pH 7.4, with 0.09% sodium azide	0.4 ml
F54547-0.08ML	In 1X PBS, pH 7.4, with 0.09% sodium azide	0.08 ml

[Bulk quote request](#)

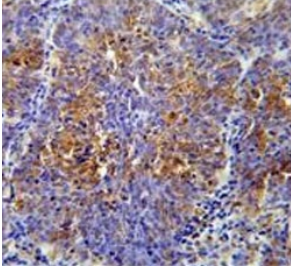
Availability	1-3 business days
Species Reactivity	Human, Mouse
Format	Purified
Host	Rabbit
Clonality	Polyclonal (rabbit origin)
Isotype	Rabbit Ig
Purity	Antigen affinity purified
UniProt	Q5U623
Localization	Nuclear
Applications	Flow Cytometry : 1:25 (1x10e6 cells) Immunohistochemistry (FFPE) : 1:25 Western Blot : 1:500-1:2000
Limitations	This ATF7IP2 antibody is available for research use only.

kDa
250
130
95
72
55

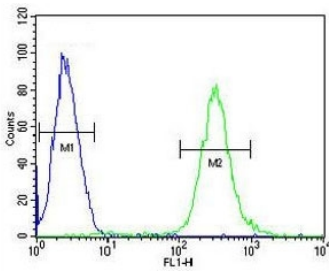
Western blot testing of human CEM cell lysate with ATF7IP2 antibody. Predicted molecular weight ~76 kDa.

kDa
72
55
36
28

Western blot testing of mouse stomach lysate with ATF7IP2 antibody. Predicted molecular weight ~76 kDa.



IHC testing of FFPE human lung carcinoma tissue with ATF7IP2 antibody. HIER: steam section in pH6 citrate buffer for 20 min and allow to cool prior to staining.



Flow cytometry testing of human CEM cells with ATF7IP2 antibody; Blue=isotype control, Green= ATF7IP2 antibody.

Description

Recruiter that couples transcriptional factors to general transcription apparatus and thereby modulates transcription regulation and chromatin formation. Can both act as an activator or a repressor depending on the context. Mediates MBD1-dependent transcriptional repression, probably by recruiting complexes containing SETDB1. The complex formed with MBD1 and SETDB1 represses transcription and probably couples DNA methylation and histone 'Lys-9' trimethylation activity (Probable).

Application Notes

The stated application concentrations are suggested starting points. Titration of the ATF7IP2 antibody may be required due to differences in protocols and secondary/substrate sensitivity.

Immunogen

A portion of amino acids 318-347 from the human protein was used as the immunogen for the ATF7IP2 antibody .

Storage

Aliquot the ATF7IP2 antibody and store frozen at -20oC or colder. Avoid repeated freeze-thaw cycles.

