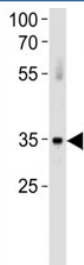


## ATF7 Antibody (F51384)

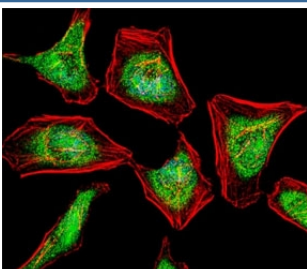
Catalog No.	Formulation	Size
F51384-0.4ML	In 1X PBS, pH 7.4, with 0.09% sodium azide	0.4 ml
F51384-0.08ML	In 1X PBS, pH 7.4, with 0.09% sodium azide	0.08 ml

[Bulk quote request](#)

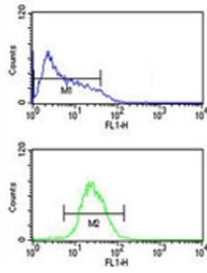
<b>Availability</b>	1-3 business days
<b>Species Reactivity</b>	Human
<b>Format</b>	Antigen affinity purified
<b>Host</b>	Rabbit
<b>Clonality</b>	Polyclonal (rabbit origin)
<b>Isotype</b>	Rabbit Ig
<b>Purity</b>	Antigen affinity
<b>UniProt</b>	P17544
<b>Applications</b>	Western Blot : 1:1000 Immunofluorescence : 1:10-1:50 Flow Cytometry : 1:10-1:50
<b>Limitations</b>	This ATF7 antibody is available for research use only.



ATF7 antibody western blot analysis in human placenta tissue lysate. Predicted molecular weight: isoforms of ~53/51/34/13kDa may be detected.



Fluorescent confocal image of HeLa cell stained with ATF7 antibody at 1:25. Immunoreactivity is localized to the nucleus and cytoplasm.



ATF7 antibody flow cytometric analysis of HL-60 cells (bottom histogram) compared to a negative control (top histogram). FITC-conjugated goat-anti-rabbit secondary Ab was used for the analysis.

## Description

The cyclic AMP-dependent transcription factor ATF7 is a member of the bZIP family of proteins and is known to bind to the cAMP response element (CRE) as a homodimer.

## Application Notes

Titration of the ATF7 antibody may be required due to differences in protocols and secondary/substrate sensitivity.

## Immunogen

A portion of amino acids 68-96 from the human protein was used as the immunogen for this ATF7 antibody.

## Storage

Aliquot the ATF7 antibody and store frozen at -20oC or colder. Avoid repeated freeze-thaw cycles.