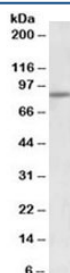


ATF6 Antibody (R34928)

Catalog No.	Formulation	Size
R34928-100UG	0.5 mg/ml in 1X TBS, pH7.3, with 0.5% BSA (US sourced) and 0.02% sodium azide	100 ug

[Bulk quote request](#)

Availability	1-3 business days
Species Reactivity	Human
Predicted Reactivity	Cow, Dog, Pig, Rat
Format	Antigen affinity purified
Clonality	Polyclonal (goat origin)
Isotype	Goat Ig
Purity	Antigen affinity
Gene ID	22926
Applications	Western Blot : 1-3ug/ml ELISA (peptide) LOD : 1:8000
Limitations	This ATF6 antibody is available for research use only.



Western blot testing of HeLa lysate with ATF6 antibody at 2ug/ml. Predicted molecular weight: 75~90kDa.

Description

Additional name(s) for this target protein: Activating transcription factor 6

Application Notes

Optimal dilution of the ATF6 antibody should be determined by the researcher.

Immunogen

Amino acids NSYRYDHSVNDK were used as the immunogen for this ATF6 antibody.

Storage

Aliquot and store the ATF6 antibody at -20oC.