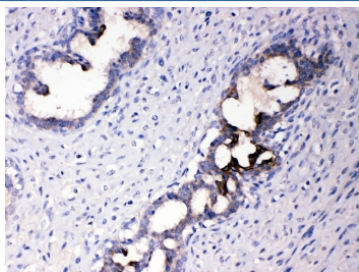


ATF6 Antibody (R32695)

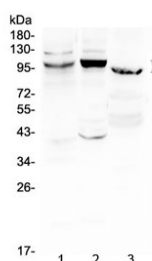
Catalog No.	Formulation	Size
R32695	0.5mg/ml if reconstituted with 0.2ml sterile DI water	100 ug

Bulk quote request

Availability	1-3 business days
Species Reactivity	Human, Mouse, Rat
Format	Antigen affinity purified
Host	Rabbit
Clonality	Polyclonal (rabbit origin)
Isotype	Rabbit IgG
Purity	Antigen affinity
Buffer	Lyophilized from 1X PBS with 2.5% BSA, 0.025% sodium azide
UniProt	P18850
Applications	Western Blot : 0.5-1ug/ml IHC (FFPE) : 1-2ug/ml
Limitations	This ATF6 antibody is available for research use only.



IHC testing of FFPE human breast cancer tissue with ATF6 antibody at 1ug/ml. Required HIER: steam section in pH6 citrate buffer for 20 min and allow to cool prior to testing.



Western blot testing of 1) rat liver, 2) mouse liver and 3) human MCF7 cell lysate with ATF6 antibody at 0.5ug/ml. Predicted molecular weight ~75 kDa, routinely observed at 90-100 kDa.

Description

ATF6, a member of the leucine zipper protein family, is an endoplasmic reticulum (ER) stress-regulated transmembrane transcription factor that activates the transcription of ER molecules. This gene is mapped to chromosome 1q23.3. ATF6 can constitutively induce the promoter of glucose-regulated protein (grp) genes through activation of the endoplasmic reticulum (ER) stress element (ERSE).

Application Notes

Optimal dilution of the ATF6 antibody should be determined by the researcher.

Immunogen

Amino acids 597-629 (AININENVINGQDYEVMMQIDCQVMDTRILHIK) from the human protein were used as the immunogen for the ATF6 antibody.

Storage

After reconstitution, the ATF6 antibody can be stored for up to one month at 4°C. For long-term, aliquot and store at -20°C. Avoid repeated freezing and thawing.