

ATF6 Antibody (F51282)

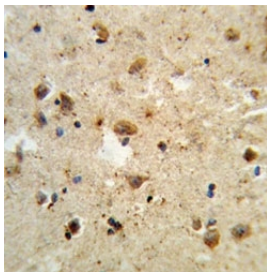
Catalog No.	Formulation	Size
F51282-0.4ML	In 1X PBS, pH 7.4, with 0.09% sodium azide	0.4 ml
F51282-0.08ML	In 1X PBS, pH 7.4, with 0.09% sodium azide	0.08 ml

[Bulk quote request](#)

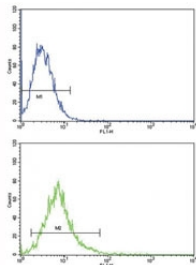
Availability	1-3 business days
Species Reactivity	Human
Predicted Reactivity	Mouse, Rat
Format	Antigen affinity purified
Host	Rabbit
Clonality	Polyclonal (rabbit origin)
Isotype	Rabbit Ig
Purity	Antigen affinity
UniProt	P18850
Applications	Western Blot : 1:1000 IHC (Paraffin) : 1:10-1:50 Flow Cytometry : 1:10-1:50
Limitations	This ATF6 antibody is available for research use only.

130
72
55
43
34
26
17

Western blot analysis of ATF6 antibody and A2058 lysate. Predicted molecular weight:
75~90kDa.



IHC analysis of FFPE human brain tissue stained with ATF6 antibody



ATF6 antibody flow cytometric analysis of K562 cells (bottom histogram) compared to a negative control (top histogram). FITC-conjugated goat-anti-rabbit secondary Ab was used for the analysis.

Description

ATF6 is an endoplasmic reticulum (ER) stress-regulated transmembrane transcription factor that activates the transcription of ER molecules.

Application Notes

Titration of the ATF6 antibody may be required due to differences in protocols and secondary/substrate sensitivity.

Immunogen

A portion of amino acids 350-377 from the human protein was used as the immunogen for this ATF6 antibody.

Storage

Aliquot the ATF6 antibody and store frozen at -20°C or colder. Avoid repeated freeze-thaw cycles.