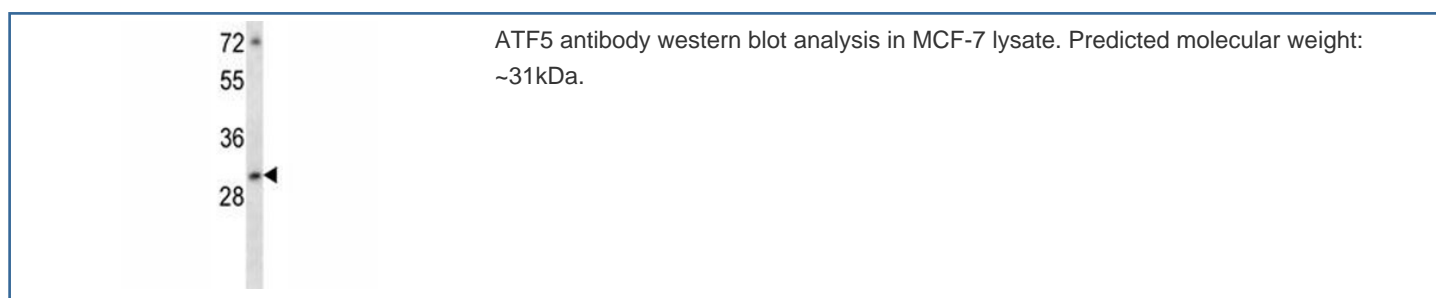


ATF5 Antibody (F44355)

Catalog No.	Formulation	Size
F44355-0.4ML	In 1X PBS, pH 7.4, with 0.09% sodium azide	0.4 ml
F44355-0.08ML	In 1X PBS, pH 7.4, with 0.09% sodium azide	0.08 ml

[Bulk quote request](#)

Availability	1-3 business days
Species Reactivity	Human
Format	Antigen affinity purified
Clonality	Polyclonal (rabbit origin)
Isotype	Rabbit Ig
Purity	Antigen affinity
UniProt	Q9Y2D1
Applications	Western Blot : 1:1000
Limitations	This ATF5 antibody is available for research use only.



Description

Transcriptional activator which binds the cAMP response element (CRE) (consensus: 5'-GTGACGT[AC][AG]-3'), a sequence present in many viral and cellular promoters and blocks the differentiation of neuroprogenitor cells into neurons. Its transcriptional activity is enhanced by CCND3 and slightly inhibited by CDK4.

Application Notes

Titration of the ATF5 antibody may be required due to differences in protocols and secondary/substrate sensitivity.

Immunogen

A portion of amino acids 188-216 from the human protein was used as the immunogen for this ATF5 antibody.

Storage

Aliquot the ATF5 antibody and store frozen at -20oC or colder. Avoid repeated freeze-thaw cycles.